

Plant Room Solutions



altecnic.co.uk

altecnic
CALEFFI group

Manufacturing is in our DNA....

Proud of our manufacturing heritage, we value our reputation and the trust of our customers. We understand that the quality of our products underpins both our own and our customers' success. For you, our customer, this means that when you sell, specify or install our products, your reputation is in safe hands.



altecnic
CALEFFI group

Hydronic
solutions for the
plumbing and
heating industry

Committed to delivering accredited and compliant products to Trade, OEM and Specification Customers



About us

From our 7500 m³ HQ in Stafford, Altecnic has supported the UK & Republic of Ireland plumbing industry for over 30 years. We understand that today's plumbing and heating components have to do much more than simply transport gas and water, and Altecnic's range meets every requirement for every application, from UK & EU legislation to global environmental standards.

Trade

Altecnic have supported Trade Merchants and their customers for over 30 years and we're proud to be their partner of choice. Visit altecnic.co.uk/trade to find out more.



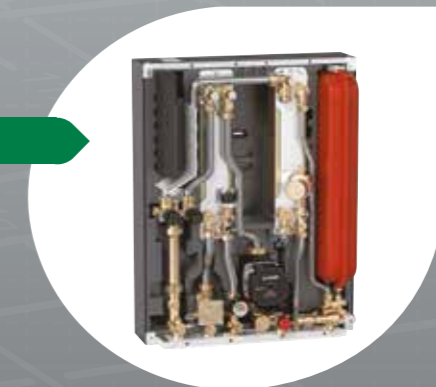
OEM

Altecnic works hard to provide valuable partnerships with our OEM customers. Our dedicated OEM experts support our customers production requirements, through the design of bespoke product and package solutions, which are complemented by our reliable and quality service. Visit altecnic.co.uk/oem to find out more.



Specification

Whether for a plant room, a hospital, or a heat network in a 16 storey apartment block, we provide the optimum hydronic solutions for any construction project. Visit altecnic.co.uk/specification to find out more.



Choosing the right products for your plant room projects

We understand when you need a product, you need a product you can trust and for it to be with you when you need it.

Altecnic products are:

- Available to order direct to site
- Available in a range of sizes
- Meet every requirement for every application from UK, EU & UKCA legislation to global environmental standards
- Supported by our technical team who are available to answer any questions or queries by phone or by email
- CPD training packages available
- Available on BIMObject. Find out more here: <https://bim.caleffi.com>

BIM Ready

Contents

8	Sectors	
10	Sustainability, quality & innovation	
12	Supporting our customers	
14	Dirt and Air Separation	45
15	Dirtmag XL	46
15	Discal Dirt and Air Separators	51
16	Discal Dirtmag	52
16	Discal Dirt & Air Separators	55
16	Discal Dirtmag De-aerator - Dirt Separators	
17	Discal De-aerators	
18	Discal Dirt & Air Separators (With Insulation)	
19	Dirtcal Brass Dirt Separators	
20	Y Pattern Strainers	
20	Dirtmag Clean®	
21	Pressurisation Sets	56
23	Matrix Digital Pressurisation Unit	57
24	Manifolds & Regulating Units	57
25	Manifolds - SEPCOLL Hydraulic Separator	58
26	Manifolds - Central Heating Systems	58
27	Manifolds - Compact	59
28	Regulating Units	
29	Dosing Pots	60
30	Dosing Pots	61
31	Hydraulic Separators	62
32	Hydraulic Separators	63
33	Magnetic Hydraulic Separator	63
34	Expansion Vessels	64
36	Heating Vessels	65
37	Potable Vessels	66
38	Flow Through Vessels	67
39	Isolation Valves	68
40	Intaball® Lever Ball Valves	69
41	Red Lever Ball Valves	71
41	Intaball® Press Fit Lever Ball Valves	72
42	Filter Ball Valves	73
42	3-Way Ball Valves	
43	DZR Intaball® Valves	
43	DZR Intaball® Valves - Butterfly Handle	
44	Butterfly Valves	
44	Ductile Iron Ball Valve	
		77
		78
		78
		79
		80
		81
		81
		82
		83
		83
		84
		84

Leading the way in Built Environments



Commercial
From offices to retail and hospitality we provide solutions that perform



Education
Smart solutions to keep even the most vulnerable users safe



Sports and Leisure
Solutions for facilities that need to perform safely and hygienically



Care Home
Superior product solutions where safety, comfort and hygiene are key



New Build
Solutions to keep new build projects cost-effective and energy efficient



Industrial
Plant room solutions that support all types of industrial applications



Hospitals
Safe and efficient solutions for protecting public health



Multi-Occupancy
Heat network solutions for tall buildings, hotels and student accommodation



Offsite
When efficiency matters, we provide a range of flexible solutions for offsite construction

We have a vast range of solutions that work to control the temperature, pressure, and safety of water in heating and cooling systems across the built environment.

Hydronic Solutions For Built Environments

Our rich manufacturing heritage combined with 30 years of working in the UK construction industry means that whatever the sector, we deliver the optimum hydronic system solutions for modern buildings.

Our team sit on the technical advisory committees of all major heating and plumbing related industry bodies that work to provide regulations and legislation that are safe and efficient. This means our team are focused on always delivering products that meet, if not exceed, current regulations.

In fact, we continually invest in our product development ensuring that our products are tested and accredited to the best industry standards. This gives our customers the peace of mind that whenever they specify or fit an Altecnic product, their project is in safe hands.

Sustainability, quality & innovation go hand in hand.

Sustainability, quality & innovation are embedded into the culture at Altecnic. From designing products that last, to the production methods we use, our commitment to recyclable packaging, and in the way we power our vehicles.

Altecnic is an environmentally responsible business, Investors in People accredited and proud to be ISO 45001 certified.



Please note

WRAS Approved Products

Details of the range of products approved can be found in the Water Fittings and Materials online directory:

www.wras.co.uk



NSF Certified Products

Details of NSF certified products to TMV2, TMV3 and DTC can be found online at:

www.nsf.org



KIWA product approval scheme

Details of KIWA approved products can be found online at:

www.kiwa.com/en



UKCA scheme

Details of the UKCA scheme can be found online at:

www.gov.uk/guidance/using-the-ukca-marking



We're reducing our environmental impact through innovative product design & packaging materials

Supporting our customers

Customer Service

Customers across the UK & ROI can rely on our experienced customer service team to be available when and where you need them.

We understand that when you need a product, you need it fast. We're proud to offer Guaranteed Next Day Delivery for a small charge. Altecnic has a £50 minimum order charge with 99.7% of orders delivered to the customer the next day.

Customer Care Line: +44(0) 1785 218207
Trade Sales: +44(0) 1785 218222
tradesales@altecnic.co.uk
OEM Sales: +44(0) 1785 218208
oemsales@altecnic.co.uk
Specifications Sales: +44(0) 1785 218210
specifications@altecnic.co.uk

Technical Support

The Altecnic technical department are the go-to team for any technical product installation, commissioning or maintenance query you or your customers may have.

Our technical team works hard to provide you with all the answers you need about Altecnic products. From giving you advice on product specifications, problem-solving, to delivering training courses, we are always on hand to help.

Technical Helpline: +44(0) 1785 218206
Technical Email: technical@altecnic.co.uk

Sales & Marketing Support

We have regional sales managers out on the road to support each customer across the UK.

We can help to provide support not only on the phone, but also in person, such as, in-branch events like coffee mornings and sales promotions to help your customers find the right Altecnic products.

Our marketing team can provide high-res product images, product information, brochures, leaflets and POS displays.

Marketing Email: marketing@altecnic.co.uk

Product Training

Our customers can benefit from the wealth of expertise and experience the Altecnic team has as part of our training academy. Our CIBSE accredited CPDs are delivered by experts including CIBSE accredited heat network consultants. Our product training sessions are delivered by those with practical experience of installing, commissioning, maintaining and testing all manner of hydronic products.

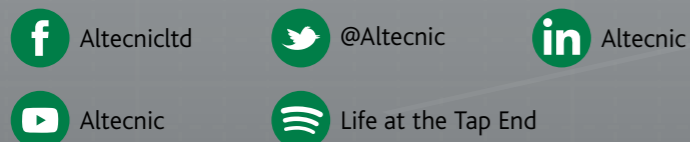
Training courses include:

- Understanding thermostatic mixing valves
- Understanding sealed systems
- Backflow prevention
- Heat networks: overcoming inefficiency and poor performance
- Hydronic balancing
- Understanding heat interface units

Training Helpline: +44(0)1785 218206
Training Email: training@altecnic.co.uk
Website: altecnic.co.uk/technicalzone



Plus, we have a wide range of technical resources, including how to videos, on our website and youtube channel.



General: +44(0)1785 218200
Accounts Enquiries: +44(0)1785 218203
Altecnic Ltd, Mustang Drive, Stafford,
Staffordshire ST16 1GW

Contact Us Today



Find your Area Sales Manager at altecnic.co.uk

Dirt and Air Separation



Dirt and Air Separation

DIRT AND AIR SEPARATION - DIRT AND AIR

Altecnic offers an industry leading range of Domestic and Commercial DIRTmag magnetic filters and separators offering unrivalled system protection using Caleffi patented technology.

DIRTMAG XL

Ref no	Size	Insulation	Connections	Body
546650	DN 50	Yes	Flanged PN16	Epoxy resin coated steel
546660	DN 65	Yes	Flanged PN16	Epoxy resin coated steel
546680	DN 80	Yes	Flanged PN16	Epoxy resin coated steel
546610	DN 100	Yes	Flanged PN16	Epoxy resin coated steel
546612	DN 125	Yes	Flanged PN16	Epoxy resin coated steel
546615	DN 150	Yes	Flanged PN16	Epoxy resin coated steel
546620	DN 200	No	Flanged PN16	Epoxy resin coated steel
546625	DN 250	No	Flanged PN16	Epoxy resin coated steel
546630	DN 300	No	Flanged PN16	Epoxy resin coated steel



546650



546620

SPECIFICATION

- Dirt separator with magnet to be coupled with flat counterflanges EN 1092-1
- Max. percentage of glycol: 50%
- Max. working pressure: 10 bar
- Temperature range: 0–100°C
- Temperature probe connection: 1/2" F
- Minimum particle size: 5µm

DISCAL DIRT AND AIR SEPARATORS

Ref no	Size	Insulation	Connections	Body
546002	22mm	No	Compression	Brass
546005	3/4"	No	F x F BSP	Brass
546006	1"	No	F x F BSP	Brass



546002

SPECIFICATION

- Medium: water glycol solution
- Max. percentage of glycol: 50%
- Max. working pressure: 10 bar
- Temperature range: 0 to 110°C
- Minimum particle size: 5µm

DIRT AND AIR SEPARATION - DIRT AND AIR

546106



DISCAL DIRTMAG

Ref no	Size	Insulation	Connections	Body
546105	¾"	No	F x F BSP	Brass
546106	1"	No	F x F BSP	Brass
546107	1¼"	No	F x F BSP	Brass

SPECIFICATION

- Deaerator - dirt separator with magnet
- Temperature range 0 to 110°C
- Max working pressure: 10 bar
- Max discharge pressure: 10 bar

546061



DISCAL DIRT AND AIR SEPARATORS

Ref no	Size	Insulation	Connections	Body
546050	DN50	No	Flanged PN16	Epoxy resin coated steel
546060	DN65	No	Flanged PN16	Epoxy resin coated steel
546080	DN80	No	Flanged PN16	Epoxy resin coated steel
546100	DN100	No	Flanged PN16	Epoxy resin coated steel
546120	DN125	No	Flanged PN16	Epoxy resin coated steel
546150	DN150	No	Flanged PN16	Epoxy resin coated steel
546051	DN50	No	Welded socket PN16	Epoxy resin coated steel
546061	DN65	No	Welded socket PN16	Epoxy resin coated steel
546081	DN80	No	Welded socket PN16	Epoxy resin coated steel
546101	DN100	No	Welded socket PN16	Epoxy resin coated steel
546121	DN120	No	Welded socket PN16	Epoxy resin coated steel
546151	DN150	No	Welded socket PN16	Epoxy resin coated steel

SPECIFICATION

- Medium: water glycol solution
- Max. percentage of glycol: 50%
- Max. working pressure: 10 bar
- Temperature range: 0 to 110°C
- Particle separation rating: up to 5µm

546118



DISCAL DIRTMAG DE-AERATOR - DIRT SEPARATORS

Ref no	Size	Insulation	Connections	Body
546118	G 1½	Yes	F x F BSP	Epoxy resin coated steel
546119	G 2	Yes	F x F BSP	Epoxy resin coated steel

SPECIFICATION

- Medium: water glycol solution
- Max. percentage of glycol: 50%
- Max. working pressure: 10 bar
- Temperature range: 0 to 110°C
- Particle separation rating: up to 5µm

DIRT AND AIR SEPARATION - DIRT AND AIR

DISCAL DE-AERATORS

Ref no	Size	Insulation	Connections	Body
551052	DN50	No	Flanged PN 16	Epoxy resin coated steel
551062	DN65	No	Flanged PN 16	Epoxy resin coated steel
551082	DN80	No	Flanged PN 16	Epoxy resin coated steel
551102	DN100	No	Flanged PN 16	Epoxy resin coated steel
551122	DN125	No	Flanged PN 16	Epoxy resin coated steel
551152	DN150	No	Flanged PN 16	Epoxy resin coated steel
551050	DN50	Yes	Flanged PN 16	Epoxy resin coated steel
551060	DN65	Yes	Flanged PN 16	Epoxy resin coated steel
551080	DN80	Yes	Flanged PN 16	Epoxy resin coated steel
551100	DN100	Yes	Flanged PN 16	Epoxy resin coated steel
551120	DN125	Yes	Flanged PN 16	Epoxy resin coated steel
551150	DN150	Yes	Flanged PN 16	Epoxy resin coated steel
551053	DN50	No	Weld ends	Epoxy resin coated steel
551063	DN65	No	Weld ends	Epoxy resin coated steel
551083	DN80	No	Weld ends	Epoxy resin coated steel
551103	DN100	No	Weld ends	Epoxy resin coated steel
551123	DN125	No	Weld ends	Epoxy resin coated steel
551153	DN150	No	Weld ends	Epoxy resin coated steel
551051	DN50	Yes	Weld ends	Epoxy resin coated steel
551061	DN65	Yes	Weld ends	Epoxy resin coated steel
551081	DN80	Yes	Weld ends	Epoxy resin coated steel
551101	DN100	Yes	Weld ends	Epoxy resin coated steel
551121	DN125	Yes	Weld ends	Epoxy resin coated steel
551151	DN150	Yes	Weld ends	Epoxy resin coated steel
551200	DN200		Flanged PN 16	Epoxy resin coated steel
551250	DN250		Flanged PN 16	Epoxy resin coated steel
551300	DN300		Flanged PN 16	Epoxy resin coated steel

SPECIFICATION

- Medium: water, non-hazardous glycol solution
- Max. percentage of glycol: 50%
- Max working pressure: 10 bar
- Max discharge pressure: 10 bar
- Temperature range: 0 to 110°C

551052



551053



551200



DIRT AND AIR SEPARATION - DIRT

546062



DISCAL DIRT AND AIR SEPARATORS (WITH INSULATION)

Ref no	Size	Insulation	Connections	Body
546052	DN50	Yes	Flanged PN16	Epoxy resin coated steel
546062	DN65	Yes	Flanged PN16	Epoxy resin coated steel
546082	DN80	Yes	Flanged PN16	Epoxy resin coated steel
546102	DN100	Yes	Flanged PN16	Epoxy resin coated steel
546122	DN125	Yes	Flanged PN16	Epoxy resin coated steel
546152	DN150	Yes	Flanged PN16	Epoxy resin coated steel
546053	DN50	Yes	Welded socket PN10	Epoxy resin coated steel
546063	DN65	Yes	Welded socket PN10	Epoxy resin coated steel
546083	DN80	Yes	Welded socket PN10	Epoxy resin coated steel
546103	DN100	Yes	Welded socket PN10	Epoxy resin coated steel
546123	DN125	Yes	Welded socket PN10	Epoxy resin coated steel
546153	DN150	Yes	Welded socket PN10	Epoxy resin coated steel

The Discal range of dirt and air separators are designed for use on heating and air conditioning systems to provide an efficient method of dirt and air removal.

SPECIFICATION

- Range of dirt and air separators for use in commercial applications
- Maximum working pressure : 10 bar
- Maximum working temperature : 110°C
- Maximum glycol concentration : 50%

DIRT AND AIR SEPARATION - DIRT

DIRTCAL BRASS DIRT SEPARATORS

Ref no	Size	Insulation	Connections	Body
546205	¾"	No	F x F BSP	Brass
546206	1"	No	F x F BSP	Brass
546207	1¼"	No	F x F BSP	Brass
546208	1½"	No	F x F BSP	Brass
546209	2"	No	F x F BSP	Brass
546550	DN50	Yes	Flanged PN16	Epoxy resin coated steel
546560	DN65	Yes	Flanged PN16	Epoxy resin coated steel
546580	DN80	Yes	Flanged PN16	Epoxy resin coated steel
546510	DN100	Yes	Flanged PN16	Epoxy resin coated steel
546512	DN125	Yes	Flanged PN16	Epoxy resin coated steel
546515	DN150	Yes	Flanged PN16	Epoxy resin coated steel
546905	¾"	No	F x F BSP	Brass
546906	1"	No	F x F BSP	Brass
546902	22mm	No	Compression	Brass

SPECIFICATION

- The Dirtcal range of dirt separators are designed for use on heating and air conditioning systems to provide an efficient method of dirt removal
- Maximum working pressure : 10 bar
- Maximum working temperature : 110°C
- Maximum glycol concentration : 50%

546205



546550



579051



Y STRAINER FOR HEATING SYSTEMS

Ref no	Size	Connections
579051	DN50	Flanged
579061	DN65	Flanged
579081	DN80	Flanged
579101	DN100	Flanged
579121	DN125	Flanged
579151	DN150	Flanged
579201	DN200	Flanged
579251	DN250	Flanged

SPECIFICATION

- Grey cast iron body, grey epoxy coating
- Max working pressure 16 bar
- Temperature range -10-100°C
- Flanged connections PN16
- Filtering mesh in stainless steel AISI 304

579000



DIRTMAG CLEAN®

Ref no	Description
579000	Self-cleaning dirt separator, adjustable height
579001	Self-cleaning dirt separator, adjustable height

The 5790 Series DIRTMAG CLEAN® is a self-cleaning dirt separator filter with magnet. The device is used in heating systems controllers to remove dirt and impurities from the circuit progressively and completely.

SPECIFICATION

- Body material: stainless steel AISI 304
- Max working pressure: 10 bar
- Working temperature range: 5 - 85°C
- Recommended flow rate Kv: 5 - 20 m³/h
- Particle separation rating down to 5µm

Pressurisation Sets



Pressurisation Sets

MATRIX DIGITAL PRESSURISATION UNIT

The Altecnic range of digital pressurisation units represent the next generation of automatic filling and pressure maintenance solutions for sealed heating and chiller systems.

The Altecnic range of digital pressurisation units represent the next generation of automatic filling and pressure maintenance solutions for sealed heating and chiller systems.

Unique Monocoque Design

Offers a compact unit that can be wall or floor mounted. Along with flexible hose connections easily configured to be left or right handed.

Advanced Digital Controls

Featuring intuitive, easy to use menu system and backlit LCD matrix display.

Premium Quality Pumps

Available in single (duty) or twin pump (duty-standby) options, offering balanced usage based on run time and extended life.

Precise Pressure Transducer

Closed loop control featuring precise system pressure monitoring and top up. System pressure control operates in 0.1 bar increments.

Robust Break Tank

Up to 18 litres capacity and with a WRAS approved fill valve offering high flow rates of 12 litres/minute. Features include type AB air gap and weir overflow.

External Alarm

Multiple Volt-free contacts and BMS connectivity to external alarms and systems.

- ✓ Simple & convenient to install
- ✓ Easy & quick commissioning
- ✓ High reliability
- ✓ Monitoring and control
- ✓ Category 5 compatible
- ✓ System connectivity

PERFORMANCE

- Up to 300,000 litre systems
- Duty or Duty Standby options
- Up to 8.0 bar pressure options
- 3 - 18 litre tank capacity options
- High flow fill valve
- Quiet operation

QUALITY

- Built-in safety – low voltage controls
- WRAS Approved fill valve
- ISO 9001:2015
- BS EN 60335 compliant
- CE compliant

RELIABILITY

- 2 year guarantee
- Robust construction
- Continuously rated pumps
- Dry run protection

MATRIX DIGITAL PRESSURISATION UNIT

MATRIX MINI

Ref no	Description	Filled Weight - Kg	Empty Weight - Kg
121-1001	Matrix Mini 130D	3.6	6.6
121-1002	Matrix Mini 230D	4.2	7.2

Suitable for maintaining pressure in large domestic and commercial sealed heating systems, chilled water systems, refrigeration units and industrial cooling systems. Matrix Mini units are exceptionally easy to install and commission and are housed in a compact and robust enclosure suitable for wall mounting.



MATRIX MIdI

Ref no	Description	Filled Weight - Kg	Empty Weight - Kg
121-1011	Matrix Midi 135D	13.4	23.4
121-1012	Matrix Midi 150D	13.4	23.4
121-1013	Matrix Midi 235D	19.4	29.4
121-1014	Matrix Midi 250D	19.4	29.4

Suitable for maintaining pressure in large domestic and commercial sealed heating systems, chilled water systems, refrigeration units and industrial cooling systems. Matrix Midi units feature continuously rated brass peripheral pumps, are exceptionally easy to install and commission and are suitable for either floor or wall mounting.



MATRIX MAXI

Ref no	Description	Filled Weight - Kg	Empty Weight - Kg
121-1021	Matrix Maxi 180D	34.0	52.0
121-1022	Matrix Maxi 280D	45.0	63.0

Suitable for maintaining pressure in large domestic and commercial sealed heating systems, chilled water systems, refrigeration units and industrial cooling systems. Matrix Maxi 8.0 bar units are exceptionally easy to install and commission and are housed in a compact and robust enclosure for floor mounting.



Manifolds & Regulating Units



Manifolds & Regulating Units

MANIFOLDS - SEPCOLL HYDRAULIC SEPARATOR

Manifolds are used in heating systems to allow different heat settings in the various rooms when there is only one heat generator.

SEPCOLL HYDRAULIC SEPARATOR MANIFOLD

Ref no	Description
559021	2 + 1 built in version with preformed insulation
559121	2 + 1 in manifold cabinet with preformed insulation
559022	2 + 2 external use with preformed insulation and brackets
559031	3 + 1 external use with preformed insulation and brackets



559022

SPECIFICATION

- Maximum working pressure : 6 bar
- Working temperature range : 0 - 100°C
- With a hot preformed insulation shell in closed cell expanded PEX
- Complete with fixing brackets

559 SERIES - MANIFOLDS

Ref no	Main Connections	Outlet Connections	Number of outlets
559222	1 1/4"	1 1/2"	2+2
559320	1"	1 1/2"	2
559231	1 1/4"	1 1/2"	3+1
559331	1 1/4"	1 1/2"	3+1
559221	1"	2 x 1 1/2" & 1 x 1"	2+1
559220	1"	1 1/2"	2+2



559222



559231



559221

SPECIFICATION

- Maximum working pressure : 6 bar
- Working temperature range : 0 - 110°C
- With preformed insulation
- Complete with mounting brackets
- Centre distance: 125mm

ACCESSORIES

Ref no	Size	Description
559001	1 1/2"	Pair of plugs with gaskets
559002	1 1/2" x 1"	Pair of fittings with gaskets
559003	1 1/2"	Pocket with magnetic insert



559001

MANIFOLDS - CENTRAL HEATING SYSTEMS

550020



550 SERIES - MANIFOLDS FOR CENTRAL HEATING SYSTEMS

Ref no	Main Connections	Outlet Connections	Number of outlets
550020	1¼"	1½"	2
550021	1¼"	1½"	2+1
550030	1½"	1½"	3
550031	1½"	1½"	3+1
550040	1½"	1½"	4

550021



SPECIFICATION

- Max working pressure: 10 bar
- Temperature range: 5 - 110°C
- Centre distance: 125mm

550031



550040



INSULATION FOR 550 SERIES - MANIFOLDS FOR CENTRAL HEATING SYSTEMS



Ref no	Description
CBN550020	for 2 outlet manifold
CBN550021	for 2+1 outlet manifold
CBN550030	for 3 outlet manifold
CBN550031	for 3+1 outlet manifold
CBN550040	for 4 outlet manifold

PIPE CONNECTION KITS FOR 550 SERIES

Ref no	Size
550001	1¼" x 1¼"
550002	1½" x 1¼"
550003	1½" x 1½"
550004	2" x 1½"

MANIFOLDS - COMPACT

550 SERIES - DN 25 COMPACT MANIFOLDS

Ref no	Main Connections	Outlet Connections	Number of outlets
550220	1½"	1½"	2
550221	1½"	1½"	2+1
550230	1½"	1½"	3
550240	1½"	1½"	4
550205	1½"	1½"	Hydraulic separator

SPECIFICATION

- Max working pressure: 6 bar
- Temperature range: 5 - 110°C
- With preformed insulation
- Centre distance: 125mm

550220



550205



550 SERIES - DN 32 COMPACT MANIFOLDS

Ref no	Main Connections	Outlet Connections	Number of outlets
550320	2"	1½"	2
550330	2"	1½"	3
550340	2"	1½"	4
550305	2"	2"	Hydraulic separator

SPECIFICATION

- Max working pressure: 6 bar
- Temperature range: 5 - 110°C
- With preformed insulation
- Centre distance: 125mm

550320



550305



550 SERIES - COMPACT MANIFOLDS

Ref no	Size	Number of outlets
550220	1½"	2 outlets
550230	1½"	3 outlets
550240	1½"	4 outlets
550221	1½"	2 + 1 outlets
550205	1½"	Hydraulic separator

SPECIFICATION

- Max working pressure: 6 bar
- Temperature range: 5 - 110°C
- Outlets: 1½" F with captive nut (ISO 228-1)
- Centre distance: 125 mm

550220



REGULATING UNITS

165600A2L



DIRECT SUPPLY UNITS

Ref no	Connection	Pump
165600A2L	1" F	UPM Auto L 25-70
165601UPM	1" F	UPML 25-105
165640WYP	1" F	PARA 25/7
165641UPM	1" F	UPML 25-105
165650WYP	1" F	PARA 25/7
165651UPM	1" F	UPML 25-105

165640WYP



SPECIFICATION

- Direct supply unit for heating systems with pre-formed insulation
- Max working pressure: 10 bar
- Max working temperature: 100°C
- Supply: 230 V - 50/60 Hz
- System side connection: 1" F
- Boiler side connection: 1 1/2" M

166600A2L



THERMAL REGULATING UNITS

Ref no	Connection	Pump
166600A2L	1" F	UPM Auto L 25-70
166601UPM	1" F	UPML 25-105
166605A2L	1" F	UPM Auto L 25-70

SPECIFICATION

- Thermostatic regulating unit for heating systems
- With pre-formed insulation
- Max working pressure: 10 bar
- Max working temperature: 100°C
- Supply: 230 V - 50/60 Hz
- System side connection: 1" F
- Boiler side connection: 1 1/2" M

167640WYP



MOTORISED REGULATING UNITS

Ref no	Connection	Pump
167652HE1	1" F	UPM3 Auto L 25-70
167662HE2	1" F	UPML 25-105
167654HE1	1" F	UPM3 Auto L 25-70
167664HE2	1" F	UPML 25-105
167640WYP	1" F	PARA 25/7
167641UPM	1" F	UPML 25-105
167650WYP	1" F	PARA 25/7
167651UPM	1" F	UPML 25-105

SPECIFICATION

- Motorised regulating unit for heating systems
- With pre-formed insulation
- Regulation with sector three-way valve
- Max working pressure: 10 bar
- System side connection: 1" F
- Boiler side connection: 1 1/2" M

Dosing Pots



Dosing Pots

DOSING POTS

Chemical dosing pots are required to insert liquid chemicals into commercial closed heating or chilled water systems. The Altecnic dosing pot vessel and tundish are manufactured from AISI 314 stainless steel and come complete with integral mounting brackets.

141-1007



DOSING POTS

Ref no	Capacity (Litres)	Description
141-1001	3.5	1x fabricated vessels with welded construction, 1x tundish, 2x integral wall brackets 4 x 1" BSP isolating valves, 2 x 1" tee pieces 4 x 1" BSP pipe nipples
141-1002	6	1x fabricated vessels with welded construction, 1x tundish, 2x integral wall brackets 4 x 1" BSP isolating valves, 2 x 1" tee pieces 4 x 1" BSP pipe nipples
141-1003	11	1x fabricated vessels with welded construction, 1x tundish, 2x integral wall brackets 4 x 1" BSP isolating valves, 2 x 1" tee pieces 4 x 1" BSP pipe nipples
141-1004	18	1x fabricated vessels with welded construction, 1x tundish, 2x integral wall brackets 4 x 1" BSP isolating valves, 2 x 1" tee pieces 4 x 1" BSP pipe nipples
141-1005	25	1x fabricated vessels with welded construction, 1x tundish, 2x integral wall brackets 4 x 1" BSP isolating valves, 2 x 1" tee pieces 4 x 1" BSP pipe nipples
141-1006	35	1x fabricated vessels with welded construction, 1x tundish, 2x integral wall brackets 4 x 1" BSP isolating valves, 2 x 1" tee pieces 4 x 1" BSP pipe nipples
141-1007	40	1x fabricated vessels with welded construction, 1x tundish, 2x integral wall brackets 4 x 1" BSP isolating valves, 2 x 1" tee pieces 4 x 1" BSP pipe nipples
141-1008	50	1x fabricated vessels with welded construction, 1x tundish, 2x integral wall brackets 4 x 1" BSP isolating valves, 2 x 1" tee pieces 4 x 1" BSP pipe nipples

SPECIFICATION

- All pipe connections 1" BSP
- 3/8" BSP air vent connection
- Maximum working pressure: 10 bar
- Maximum operating temperature: 90°C
- Complies with the Pressure Equipment Directive (PED) 2014/68/EU

Hydraulic Separators



Hydraulic Separators

HYDRAULIC SEPARATORS

A hydraulic separator reduces flow velocity, in the vessel, which allows for two secondary functions - air removal and dirt removal - in one device. 3-in-1 hydraulic separators make air removal and dirt removal primary functions, along with hydraulic separation, with no added piping connections or installation costs. Altecnic offer a wide range of hydraulic separators to suit your plant room needs.

548009



HYDRAULIC SEPARATOR

Ref no	Size	Insulation	Connections	Body
548006	1"	Yes	F x F BSP	Epoxy resin coated steel
548007	1¼"	Yes	F x F BSP	Epoxy resin coated steel
548008	1½"	Yes	F x F BSP	Epoxy resin coated steel
548009	2"	Yes	F x F BSP	Epoxy resin coated steel
548052	DN50	Yes	Flanged PN16	Epoxy resin coated steel
548062	DN65	Yes	Flanged PN16	Epoxy resin coated steel
548082	DN80	Yes	Flanged PN16	Epoxy resin coated steel
548102	DN100	Yes	Flanged PN16	Epoxy resin coated steel
548122	DN125	Yes	Flanged PN16	Epoxy resin coated steel
548152	DN150	Yes	Flanged PN16	Epoxy resin coated steel
548200	DN200	No	Flanged PN10	Epoxy resin coated steel
548250	DN250	No	Flanged PN10	Epoxy resin coated steel
548300	DN300	No	Flanged PN10	Epoxy resin coated steel

SPECIFICATION - 548 SERIES SCREWED IRON

- Hydraulic separator. Connections 1" F (from 1" to 2") with union
- Epoxy resin coated steel body
- Medium water and non-hazardous glycol solutions excluded from the guidelines of EC directive 67/548
- Maximum percentage of glycol : 30%
- Maximum working pressure : 10 bar
- Working temperature range : 0 - 110°C

548102



548200



SPECIFICATION - 548 SERIES FLANGE

- Hydraulic separator. Flanged connections DN 50 (from DN 50 to DN 150) PN 16, DN 200 (from DN 200 to DN 300) PN 10, for coupling with counter flanges EN 1092-1. Epoxy resin coated steel body.
- Medium water and non-hazardous glycol solutions excluded from the guidelines of EC directive 67/548.
- Maximum percentage of glycol : 30%
- Maximum working pressure : 10 bar
- Working temperature range : 0 - 110°C

HYDRAULIC SEPARATORS

MAGNETIC HYDRAULIC SEPARATOR

Ref no	Size	Insulation	Connections	Body
549506	1"	Yes	F x F BSP	Epoxy resin coated steel
549507	1¼"	Yes	F x F BSP	Epoxy resin coated steel
549508	1½"	Yes	F x F BSP	Epoxy resin coated steel
549509	2"	Yes	F x F BSP	Epoxy resin coated steel

SPECIFICATION

- Maximum working pressure : 10 bar
- Working temperature range : 0 - 100°C
- Maximum percentage of glycol : 50%



549506

Expansion Vessels



Expansion Vessels

EXPANSION VESSELS

Nitrogen, a dry inert gas used in the Reflex range of expansion vessels, improves the vessel's life span by reducing corrosion inside the vessel, and prevents loss of pre-charge pressure. Nitrogen permeates through rubber slower than oxygen, is far less reactive to both steel and aluminium and does not degrade rubber prolonging the membrane life.



Oxygen in compressed air permeates through the membrane, thus reducing the pre-charge pressure over time. During normal operation, oxygen oxidises the membrane in the vessel, causing under-inflation, but dry nitrogen will maintain proper inflation pressure and will not corrode the inside of the vessel.

It's recognised in the industry that oxidative aging is one of the primary causes of decreased vessel life. Tests have shown that if vessels are inflated with nitrogen, there is a significant reduction in failure and increased vessel life.

VESSELS - HEATING VESSELS

HV25C



NITROGEN FILLED VESSELS

HEATING EXPANSION VESSELS 8 - 25 LITRES

Ref. no	Cap (L)	Dia (Ø D mm)	Ht (H mm)	Connection (inches)	Wt (kg)	Max pressure	Bracket
HV8C	8	272	235	R ¾	1.7	3 bar	No
HV12C	12	272	315	R ¾	2.3	3 bar	No
HV18C	18	308	365	R ¾	2.8	3 bar	No
HV25C	25	308	485	R ¾	3.5	3 bar	No
HVB8C	8	272	235	R ¾	1.7	3 bar	Yes
HVB12C	12	272	315	R ¾	2.3	3 bar	Yes
HVB18C	18	308	365	R ¾	2.8	3 bar	Yes
HVB25C	25	308	485	R ¾	3.5	3 bar	Yes



CE marked

SPECIFICATION

- Test pressure: 1.5 x max working pressure
- Max flow operating temperature: 120°C
- Max vessel operating temperature: 70°C
- Factory pre-charge: 1.5 bar - nitrogen
- Membrane: Synthetic Rubber

HVB12C



HV35C



NITROGEN FILLED VESSELS

HEATING EXPANSION VESSELS 35 - 140 LITRES

Ref. no	Cap (L)	Dia (Ø D mm)	Ht (H mm)	Connection (inches)	Wt (kg)	Max pressure
HV35C	35	376	465	R ¾	5.7	3 bar
HV50C	50	441	495	R ¾	7.5	6 bar
HV80C	80	512	570	R 1	9.9	6 bar
HV100C	100	512	680	R 1	11.2	6 bar
HV140C	140	512	895	R 1	14.5	6 bar



CE marked

SPECIFICATION

- Test pressure: 1.5 x max working pressure
- Max flow operating temperature: 120°C
- Max vessel operating temperature: 70°C
- Factory pre-charge: 1.5 bar - nitrogen
- With feet
- Membrane: Synthetic Rubber

HV250W



NITROGEN FILLED VESSELS

HEATING EXPANSION VESSELS 200 - 800 LITRES

Ref. no	Cap (L)	Dia (Ø D mm)	Ht (H mm)	Connection (inches)	Wt (kg)	Max pressure
HV200W	200	634	760	R 1	37	6 bar
HV250W	250	634	890	R 1	45	6 bar
HV300W	300	634	1090	R 1	52	6 bar
HV400W	400	740	1090	R 1	65	6 bar
HV500W	500	740	1290	R 1	79	6 bar
HV600W	600	740	1530	R 1	85	6 bar
HV800W	800	740	1995	R 1	103	6 bar



CE marked

SPECIFICATION

- Test pressure: 1.5 x max working pressure
- Max flow operating temperature: 120°C
- Max vessel operating temperature: 70°C
- Factory pre-charge: 1.5 bar - nitrogen
- With feet
- 300l - 800l vessels palletised
- Membrane: Synthetic Rubber

VESSELS - POTABLE VESSELS

VERTICAL POTABLE WATER EXPANSION VESSELS 8 - 33 LITRES

Ref. no	Cap (L)	Dia (Ø D mm)	Ht (H mm)	Connection (inches)	Wt (kg)	Max pressure
PV8W	8	206	335	G ¾	1.8	10 bar
PV12W	12	280	310	G ¾	2.4	10 bar
PV18W	18	280	410	G ¾	2.8	10 bar
PV25W	25	280	520	G ¾	4.7	10 bar
PV33W	33	354	455	G ¾	6.6	10 bar



CE marked



PV33W

NITROGEN FILLED VESSELS

SPECIFICATION

- Max working pressure: 10 bar
- Max vessel operating temperature: 70°C
- Factory pre-charge: 4.0 bar - nitrogen
- System water connection thread: BS EN ISO 228 - male
- Membrane: Fixed Butyl

VERTICAL POTABLE WATER EXPANSION VESSELS 50 - 1000 LITRES

Ref. no	Cap (L)	Dia (Ø D mm)	Ht (H mm)	Connection (inches)	Wt (kg)	Max pressure
PV50W	50	409	605	G 1	9.5	10 bar
PV60W	60	409	740	G 1	14	10 bar
PV80W	80	480	745	G 1	16	10 bar
PV100W	100	480	850	G 1	19	10 bar
PV140W	140	480	1015	R 1	29	10 bar
PV200W	200	634	970	G 1¼	40	10 bar
PV300W	300	634	1270	G 1¼	54	10 bar
PV400W	400	740	1245	G 1¼	70	10 bar
PV500W	500	740	1475	G 1¼	79	10 bar
PV600W	600	740	1860	G 1½	103	10 bar
PV800W	800	740	2325	G 1½	195	10 bar
PV1000W	1000	740	2804	G 1½	228	10 bar



CE marked



PV500W

NITROGEN FILLED VESSELS

SPECIFICATION

- Max working pressure: 10 bar
- Max vessel operating temperature: 70°C
- Factory pre-charge: 4.0 bar - nitrogen
- Membrane: Replaceable Butyl (PV140W: Fixed Butyl)
- System water connection thread: BS EN ISO 228 - male
- 140 litre size: BS EN 10226 - male
- Top connection 80 litre +
- 300l - 1000l vessels palletised

HORIZONTAL POTABLE WATER EXPANSION VESSELS 25 - 100 LITRES

Ref. no	Cap (L)	Dia (Ø D mm)	Ht (H mm)	Connection (inches)	Wt (kg)	Max pressure
PVH25W	25	280	520	G ¾	5.5	10 bar
PVH50W	50	409	503	G 1	15	10 bar
PVH80W	80	480	595	G 1	18	10 bar
PVH100W	100	480	705	G 1	21	10 bar



CE marked



PVH50W

NITROGEN FILLED VESSELS

SPECIFICATION

- Max working pressure: 10 bar
- Max vessel operating temperature: 70°C
- Factory pre-charge: 2.0 bar - nitrogen
- System water connection thread: BS EN ISO 228 - male
- Membrane: Fixed Butyl

VESSELS - FLOW THROUGH VESSELS

PVA8G



FLOW THROUGH POTABLE WATER EXPANSION VESSELS 8 - 600 LITRES - MEMBRANE: FIXED BUTYL

Ref. no	Cap (L)	Dia (Ø D mm)	Ht (H mm)	Connection (inches)	Wt (kg)	Max pressure
PVA8G*	8	206	345	G ¾"	2.7	10 bar
PVA12G*	12	280	325	G ¾"	3.7	10 bar
PVA18G*	18	280	420	G ¾"	4.7	10 bar
PVA25G*	25	280	530	G ¾"	5.7	10 bar
PVA33G*	33	354	465	G ¾"	6.5	10 bar
PVA60G	60	409	755	1¼"	15.0	10 bar
PVA80G	80	480	750	1¼"	16.5	10 bar
PVA100G	100	480	856	1¼"	18.6	10 bar
PVA200G	200	634	975	1¼"	37.0	10 bar
PVA300G	300	634	1275	1¼"	43.5	10 bar
PVA400G	400	740	1245	1¼"	73.0	10 bar
PVA500G	500	740	1475	1¼"	69.0	10 bar
PVA600G	600	740	1860	DN50/PN16	164.0	10 bar



* Up to 33 Litres only

CE marked

SPECIFICATION

- Anti-Legionella vessel when used with FlowJet attachment
- 300l to 600l vessels palletised

PVACC1



FLOWJET VALVE FOR POTABLE WATER SYSTEMS

Ref no	Connections	Max pressure
PVACC1*	G ¾"	10 bar
PVACC2	G 1¼"	10 bar



Isolation Valves



Isolation
Valves

ISOLATION VALVES

Altecnic offer a range of valves to control the flow of water. Available in a range of sizes with a variety of different handles to suit each application.

AI-171B07



INTABALL® LEVER BALL VALVES - BLUE HANDLE

Ref no	Size	Connections	Body	Pressure
AI-171B02	1/4"	F x F BSP	Brass	50 bar
AI-171B03	3/8"	F x F BSP	Brass	50 bar
AI-171B04	1/2"	F x F BSP	Brass	50 bar
AI-171B05	3/4"	F x F BSP	Brass	50 bar
AI-171B06	1"	F x F BSP	Brass	40 bar
AI-171B07	1 1/4"	F x F BSP	Brass	25 bar
AI-171B08	1 1/2"	F x F BSP	Brass	16 bar
AI-171B09	2"	F x F BSP	Brass	16 bar
AI-171B10	2 1/2"	F x F BSP	Brass	16 bar
AI-171B11	3"	F x F BSP	Brass	16 bar
AI-171B12	4"	F x F BSP	Brass	16 bar

SPECIFICATION

- Temperature range -20°C - 99°C
- Complies with full bore BS EN 13828:2003
- Compression valve also available

FULL BORE



AI-171R02



INTABALL® LEVER BALL VALVES - RED HANDLE

Ref no	Size	Connections	Body	Pressure
AI-171R02	1/4"	F x F BSP	Brass	50 bar
AI-171R03	3/8"	F x F BSP	Brass	50 bar
AI-171R04	1/2"	F x F BSP	Brass	50 bar
AI-171R05	3/4"	F x F BSP	Brass	50 bar
AI-171R06	1"	F x F BSP	Brass	40 bar
AI-171R07	1 1/4"	F x F BSP	Brass	25 bar
AI-171R08	1 1/2"	F x F BSP	Brass	16 bar
AI-171R09	2"	F x F BSP	Brass	16 bar
AI-171R10	2 1/2"	F x F BSP	Brass	16 bar
AI-171R11	3"	F x F BSP	Brass	16 bar
AI-171R12	4"	F x F BSP	Brass	16 bar

SPECIFICATION

- Temperature range -20°C - 99°C
- Complies with full bore BS EN 13828:2003
- Compression valve also available

FULL BORE



ISOLATION VALVES

RED LEVER BALL VALVE

Ref no	Size	Connections	Body	Pressure
AI-856A04	1/2"	M x F BSP	Brass	50 bar
AI-856A05	3/4"	M x F BSP	Brass	50 bar
AI-856A06	1"	M x F BSP	Brass	40 bar
AI-856A07	1 1/4"	M x F BSP	Brass	25 bar
AI-856A08	1 1/2"	M x F BSP	Brass	16 bar
AI-856A09	2"	M x F BSP	Brass	16 bar



AI-856A05

SPECIFICATION

- Temperature range: -20°C - 99°C
- Complies with full bore BS EN 13828:2003
- Compression valve also available

INTABALL® PRESS FIT LEVER BALL VALVES - RED LEVER

Ref no	Size	Connections	Body	Pressure
124-8101	15mm x 15mm	Copper press fit	Brass	40 bar
124-8103	22mm x 22mm	Copper press fit	Brass	40 bar
124-8104	28mm x 28mm	Copper press fit	Brass	40 bar
124-8105	35mm x 35mm	Copper press fit	Brass	25 bar
124-8106	42mm x 42mm	Copper press fit	Brass	10 bar
124-8107	54mm x 54mm	Copper press fit	Brass	10 bar
124-8108	15mm x 1/2"	Copper press fit x F BSP	Brass	40 bar
124-8110	22mm x 3/4"	Copper press fit x F BSP	Brass	40 bar
124-8111	28mm x 1"	Copper press fit x F BSP	Brass	40 bar
124-8112	35mm x 1 1/4"	Copper press fit x F BSP	Brass	25 bar



124-8101

SPECIFICATION

- Anti blow out stem
- Lever operated through 90° with bi-directional resistance
- PTFE body seats for reliable isolation
- M&V press up to 35mm

FULL BORE



INTABALL® PRESS FIT LEVER BALL VALVES - BLUE LEVER

Ref no	Size	Connections	Body	Pressure
124-8201	15mm x 15mm	Copper press fit	Brass	40 bar
124-8203	22mm x 22mm	Copper press fit	Brass	40 bar
124-8204	28mm x 28mm	Copper press fit	Brass	40 bar
124-8205	35mm x 35mm	Copper press fit	Brass	25 bar
124-8206	42mm x 42mm	Copper press fit	Brass	10 bar
124-8207	54mm x 54mm	Copper press fit	Brass	10 bar
124-8208	15mm x 1/2"	Copper press fit x F BSP	Brass	40 bar
124-8210	22mm x 3/4"	Copper press fit x F BSP	Brass	40 bar
124-8211	28mm x 1"	Copper press fit x F BSP	Brass	40 bar
124-8212	35mm x 1 1/4"	Copper press fit x F BSP	Brass	25 bar



124-8201

SPECIFICATION

- Anti blow out stem
- Lever operated through 90° with bi-directional resistance
- PTFE body seats for reliable isolation
- M&V press up to 35mm

FULL BORE



ISOLATION VALVES

124-6003 CST



FILTER BALL VALVES

Ref no	Size	Connections	Body	Pressure
124-6003 CST*	1/2"	F x F BSP	Brass	30 bar
124-6004 CST	3/4"	F x F BSP	Brass	30 bar
124-6005 CST	1"	F x F BSP	Brass	30 bar
124-6006 CST	1 1/4"	F x F BSP	Brass	20 bar
124-6007 CST	1 1/2"	F x F BSP	Brass	20 bar
124-6008 CST	2"	F x F BSP	Brass	20 bar

* 1/2" complies with the full bore and the other sizes exceeds the reduced bore diameter circle specified in BS EN 13547.



SPECIFICATION

- Max pressure 1/2" - 1": 30 bar
- Max pressure 1 1/4" - 2": 20 bar
- Max temperature: 99°C
- Working temp. range: -20 - 100°C
- Strainer mesh size: 500 µ - 0.5 mm
- Threaded ends: ISO 228 - 1

124-5001 CST



3 WAY BALL VALVES - L PORT

Ref no	Size	Description	Body
124-5001 CST	1/4"	L-pattern 3-way ball valve	Brass
124-5002 CST	3/8"	L-pattern 3-way ball valve	Brass
124-5003 CST	1/2"	L-pattern 3-way ball valve	Brass
124-5004 CST	3/4"	L-pattern 3-way ball valve	Brass
124-5005 CST	1"	L-pattern 3-way ball valve	Brass
124-5006 CST	1 1/4"	L-pattern 3-way ball valve	Brass
124-5007 CST	1 1/2"	L-pattern 3-way ball valve	Brass
124-5008 CST	2"	L-pattern 3-way ball valve	Brass
125-5009 CST	2 1/2"	L-pattern 3-way ball valve	Brass

SPECIFICATION

- Min working temperature: -10°C
- Max working temperature: +100°C
- Max pressure: 40 bar
- Threaded ends: ISO 228/1



3 WAY BALL VALVES - T PORT

Ref no	Size	Description	Body
124-5010 CST	1/4"	T-pattern 3-way ball valve	Brass
124-5011 CST	3/8"	T-pattern 3-way ball valve	Brass
124-5012 CST	1/2"	T-pattern 3-way ball valve	Brass
124-5013 CST	3/4"	T-pattern 3-way ball valve	Brass
124-5014 CST	1"	T-pattern 3-way ball valve	Brass
124-5015 CST	1 1/4"	T-pattern 3-way ball valve	Brass
124-5016 CST	1 1/2"	T-pattern 3-way ball valve	Brass
124-5017 CST	2"	T-pattern 3-way ball valve	Brass
125-5018 CST	2 1/2"	T-pattern 3-way ball valve	Brass

SPECIFICATION

- Min working temperature: -10°C
- Max working temperature: +100°C
- Max. pressure: 40 bar
- Threaded ends: ISO 228/1

ISOLATION VALVES

DZR INTABALL VALVE - BLUE HANDLE

Ref no	Size	Connections	Body	Pressure
AI-383B15	15mm	Compression	DZR	25 bar
AI-383B22	22mm	Compression	DZR	25 bar
AI-383B28	28mm	Compression	DZR	25 bar

SPECIFICATION

- Complies with full bore BS EN 13828:2003
- Temperature range: -20°C - 99°C
- Max temperature at 16 bar: 30°C
- Max temperature at 10 bar: 65°C
- Max temperature at 6.9 bar: 100°C

FULL BORE



DZR INTABALL VALVE - BLUE BUTTERFLY HANDLE

Ref no	Size	Connections	Body	Pressure
AI-383115	15mm	Compression	DZR	25 bar
AI-383222	22mm	Compression	DZR	25 bar
AI-383228	28mm	Compression	DZR	25 bar

SPECIFICATION

- Complies with full bore BS EN 13828:2003
- Temperature range: -20°C - 99°C
- Max temperature at 16 bar: 30°C
- Max temperature at 10 bar: 65°C
- Max temperature at 6.9 bar: 100°C

FULL BORE



DZR INTABALL VALVE - RED HANDLE

Ref no	Size	Connections	Body	Pressure
AI-383R15	15mm	Compression	DZR	25 bar
AI-383R22	22mm	Compression	DZR	25 bar
AI-383R28	28mm	Compression	DZR	25 bar

SPECIFICATION

- Complies with full bore BS EN 13828:2003
- Temperature range: -20°C - 99°C
- Max temperature at 16 bar: 30°C
- Max temperature at 10 bar: 65°C
- Max temperature at 6.9 bar: 100°C

FULL BORE



DZR INTABALL VALVE - RED BUTTERFLY HANDLE

Ref no	Size	Connections	Body	Pressure
AI-383RB5	15mm	Compression	DZR	25 bar
AI-383RB2	22mm	Compression	DZR	25 bar
AI-383RB8	28mm	Compression	DZR	25 bar

SPECIFICATION

- Complies with full bore BS EN 13828:2003
- Temperature range: -20°C - 99°C
- Max temperature at 16 bar: 30°C
- Max temperature at 10 bar: 65°C
- Max temperature at 6.9 bar: 100°C

FULL BORE





LV9911 WAFER BUTTERFLY VALVE

Size	Connections	Body
DN40	Flanged PN16	Ductile iron
DN50	Flanged PN16	Ductile iron
DN65	Flanged PN16	Ductile iron
DN80	Flanged PN16	Ductile iron
DN100	Flanged PN16	Ductile iron
DN125	Flanged PN16	Ductile iron
DN150	Flanged PN16	Ductile iron
DN200	Flanged PN16	Ductile iron
DN250	Flanged PN16	Ductile iron

SPECIFICATION

- Test Pressure - Hydrostatic: Shell 24 bar, seat 17.6 bar
- Pressure Temperature range: -10 - 120°C



LV9912 FULLY LUGGED BUTTERFLY VALVE

Size	Connections	Body
DN40	Flanged PN16	Ductile iron
DN50	Flanged PN16	Ductile iron
DN65	Flanged PN16	Ductile iron
DN80	Flanged PN16	Ductile iron
DN100	Flanged PN16	Ductile iron
DN125	Flanged PN16	Ductile iron
DN150	Flanged PN16	Ductile iron
DN200	Flanged PN16	Ductile iron
DN250	Flanged PN16	Ductile iron

SPECIFICATION

- Test Pressure - Hydrostatic: Shell 24 bar, seat 17.6 bar
- Pressure Temperature range: -10 - 120°C



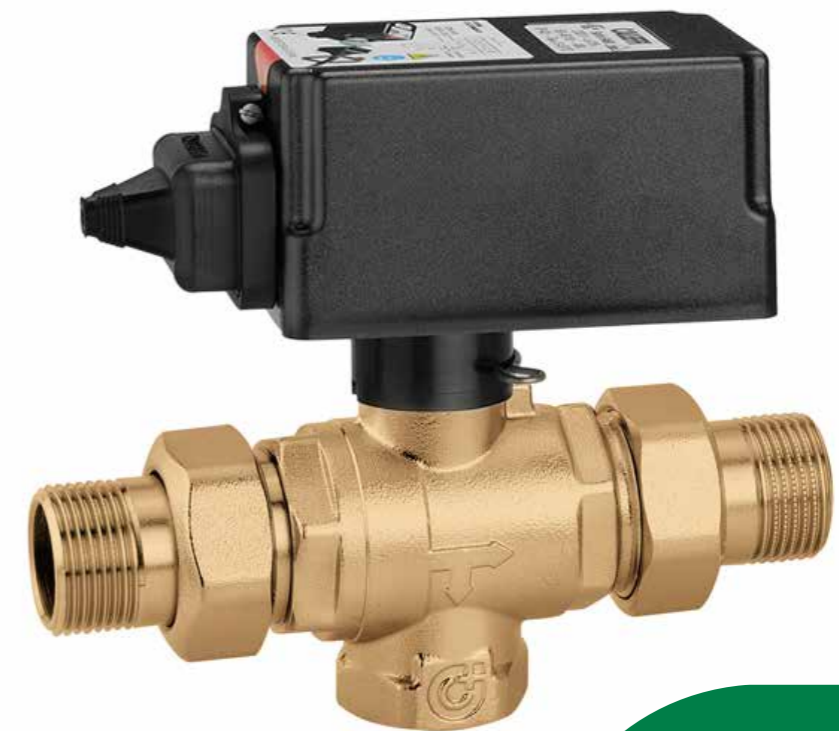
DUCTILE IRON BALL VALVE

Ref no	Size	Connections	Body
124-5100 CST	50mm	Flanged	Ductile iron
124-5101 CST	65mm	Flanged	Ductile iron
124-5102 CST	80mm	Flanged	Ductile iron
124-5103 CST	100mm	Flanged	Ductile iron
124-5104 CST	125mm	Flanged	Ductile iron
124-5105 CST	150mm	Flanged	Ductile iron

SPECIFICATION

- Max working pressure between flanges: 16 bar
- Max working temperature end of line: 10 bar
- Temperature range: -10 - 100°C

Motorised Valves



Motorised Valves

MOTORISED BALL ZONE VALVES

Altecnic offer a range of motorised valves to be used in applications requiring automated valve control. Available in a range of sizes to suit each application.

647050



TWO-WAY BALL ZONE VALVE - 6470 SERIES

Size	Size	Kv (m³/h)
647040	½"	17,00
647050	¾"	17,27
647060	1"	36,58
647070	1¼"	39,50

SPECIFICATION

- Max working pressure: 10 bar
- Temperature range: -5 - 110°C

648050



THREE-WAY BALL ZONE VALVE - 6480 SERIES

Size	Size	Kv (m³/h) straight	Kv (m³/h) by-pass
648040	½"	14,10	2,45
648050	¾"	14,43	2,50
648060	1"	33,52	3,60
648070	1¼"	36,00	3,80

SPECIFICATION

- Max working pressure: 10 bar
- Temperature range: -5 - 110°C

648950



THREE-WAY BALL ZONE VALVE WITH BY-PASS TEE - 6489 SERIES

Size	Size	Kv (m³/h) straight	Kv (m³/h) by-pass
648950	¾"	14,43	1,20

SPECIFICATION

- Max working pressure: 10 bar
- Temperature range: -5 - 110°C

MOTORISED BALL ZONE VALVES

BALANCED BY-PASS TEE - 6490 SERIES

Size	Size	Description	Kv (m³/h) tee + valve inby-pass
649040	½"	without nozzle	2,20
649044	½"	U4	0,78
649046	½"	U6	1,16
649048	½"	U8	1,40
649050	¾"	without nozzle	2,25
649054	¾"	U4	0,87
649056	¾"	U6	1,20
649058	¾"	U8	1,50
649060	1"	without nozzle	3,25
649064	1"	U4	1,90
649066	1"	U6	2,50
649068	1"	U8	3,25
649070	1¼"	without nozzle	3,40



649050

SPECIFICATION

- For ball zone valves 6480 series
- Max working pressure: 10 bar
- Temperature range: -5 - 110°C

ACTUATOR FOR BALL ZONE VALVES

Size	Supply Voltage
646002	230 V (±20%)
646004	24 V (±10%)



646002

SPECIFICATION

- Actuator for ball zone valves 6470, 6480 and 6489 series
- Power consumption: 4 VA
- Operating time: 50 s

ACCESSORIES

Size	Size	Description
648005	¾"	Pair of off-centre fittings
648006	1"	Pair of off-centre fittings
6480018	-	Off-centre kit



648005

MOTORISED BALL ZONE VALVES WITH INSULATION

645252



MOTORISED TWO-WAY BALL ZONE VALVE - 6452 SERIES

Size	Size	Supply voltage	Kv (m³/h)
645242	½"	230 V	17,00
645252	¾"	230 V	17,27
645262	1"	230 V	36,58
645272	1¼"	230 V	39,50
645244	½"	24 V	17,00
645254	¾"	24 V	17,27
645264	1"	24 V	36,58
645274	1¼"	24 V	39,50

SPECIFICATION

- With insulation
- Max working pressure: 10 bar
- Temperature range: -10 - 110°C

645352



MOTORISED THREE-WAY BALL ZONE VALVE - 6453 SERIES

Size	Size	Supply voltage	Kv (m³/h) straight	Kv (m³/h) by-pass
645342	½"	230 V	14,10	2,45
645352	¾"	230 V	14,43	2,50
645362	1"	230 V	33,52	3,60
645372	1¼"	230 V	36,00	3,80
645344	½"	24 V	14,10	2,45
645354	¾"	24 V	14,43	2,50
645364	1"	24 V	33,52	3,60
645374	1¼"	24 V	36,00	3,80

SPECIFICATION

- With insulation
- Max working pressure: 10 bar
- Temperature range: -10 - 110°C

MOTORISED BALL ZONE VALVES WITH INSULATION

BY-PASS TEE - 6459 SERIES

Size	Size	Kv (m³/h) tee + valve by-pass
645940	½"	2,20
645950	¾"	2,25
645960	1"	3,25
645970	1¼"	3,40

645950



SPECIFICATION

- For motorised ball zone valves 6453 series
- With insulation
- Max working pressure: 10 bar
- Temperature range: -10 - 110°C

SPARE ACTUATOR

Size	Supply Voltage
645002	230 V
645004	24 V

645002



SHELL INSULATION

Size	Size
645901	½" - ¾"
645900	1" - 1¼"

645900



MOTORISED BALL ZONE VALVES

644252



MOTORISED TWO-WAY BALL ZONE VALVE - 6442 SERIES

Size	Size	Supply voltage	Kv (m³/h)
644242	½"	230 V	11,1
644252	¾"	230 V	11,1
644262	1"	230 V	11,1
644244	½"	24 V	11,1
644254	¾"	24 V	11,1
644264	1"	24 V	11,1

SPECIFICATION

- Max working pressure: 10 bar
- Temperature range: -5 - 110°C

644352 3BY



MOTORISED THREE-WAY BALL ZONE VALVE, BY-PASS VERSION - 6443 SERIES

Size	Size	Supply voltage	Kv (m³/h) straight	Kv (m³/h) by-pass
644342 3BY	½"	230 V	10,3	1,8
644352 3BY	¾"	230 V	10,3	1,8
644362 3BY	1"	230 V	10,3	1,8
644344 3BY	½"	24 V	10,3	1,8
644354 3BY	¾"	24 V	10,3	1,8
644364 3BY	1"	24 V	10,3	1,8

SPECIFICATION

- Max working pressure: 10 bar
- Temperature range: -5 - 110°C

644452



MOTORISED THREE-WAY BALL ZONE VALVE WITH TELESCOPIC BY-PASS TEE - 6444 SERIES

Size	Size	Supply voltage	Kv (m³/h) straight	Kv (m³/h) by-pass
644442	½"	230 V	10,3	1,2
644452	¾"	230 V	10,3	1,2
644462	1"	230 V	10,3	1,2
644444	½"	24 V	10,3	1,2
644454	¾"	24 V	10,3	1,2
644464	1"	24 V	10,3	1,2

SPECIFICATION

- Max working pressure: 10 bar
- Temperature range: -5 - 110°C

644002



3-CONTACT CONTROL SPARE ACTUATOR

Size	Supply voltage
644002	230 V
644004	24 V

THERMO-ELECTRIC PISTON ZONE VALVES

TWO-WAY PISTON ZONE VALVE - 632 SERIES

Size	Size	Kv (m³/h)
632400	½"	5,10
632500	¾"	6,27
632600	1"	6,38

SPECIFICATION

- Max working pressure: 10 bar
- Temperature range: -5 - 95°C



632500

THREE-WAY PISTON ZONE VALVE - 633 SERIES

Size	Size	Kv (m³/h) straight	Kv (m³/h) by-pass
633400	½"	4,99	4,33
633500	¾"	6,91	4,91
633600	1"	6,45	5,30
644264	1"	24 V	11,1

SPECIFICATION

- Max working pressure: 10 bar
- Temperature range: -5 - 95°C



633500

BALANCED BY-PASS TEE - 635 SERIES

Size	Size	Description	Kv (m³/h) tee + valve in by-pass
635440	½"	U4	0,96
635460	½"	U6	1,32
635480	½"	U8	1,73
635540	¾"	U4	0,98
635560	¾"	U6	1,36
635580	¾"	U8	1,79
635640	1"	U4	1,02
635660	1"	U6	1,43
635680	1"	U8	1,88

SPECIFICATION

- For zone valves - 633 series
- Max working pressure: 10 bar
- Temperature range: -5 - 95°C



635460

THERMO-ELECTRIC ACTUATOR

Size	Supply voltage	With manual actuator	With auxiliary microswitch
630012	230 V	No	Yes
630014	24 V	No	Yes
630002	230 V	No	No
630004	24 V	No	No
630112	230 V	Yes	Yes
630114	24 V	Yes	Yes
630102	230 V	Yes	No
630104	24 V	Yes	No



630102

MOTORISED THREE-WAY BALL VALVES FOR HIGH FLOW RATES

MOTORISED THREE-WAY BALL VALVES WITH "T" DRILLING. 90° ROTATION



Size	Size	Supply voltage	Actuator torque (N-m)	Kv (m³/h)
638153	¾"	230 V	15	9,5
638163	1"	230 V	15	12,9
638173	1¼"	230 V	15	24,7
638183	1½"	230 V	15	47
638193	2"	230 V	15	50
638155	¾"	24 V	15	9,5
638165	1"	24 V	15	12,9
638175	1¼"	24 V	15	24,7
638185	1½"	24 V	15	47
638195	2"	24 V	15	50

SPECIFICATION

- Max working pressure: 16 bar
- Temperature range: -10 - 110°C
- Ambient temperature range: -10 - 55°C

MOTORISED THREE-WAY BALL VALVES FOR HIGH FLOW RATES

MOTORISED THREE-WAY BALL VALVES WITH "L" DRILLING. 180° ROTATION



638093

Size	Size	Supply voltage	Actuator torque (N-m)	Kv (m³/h)
638053	¾"	230 V	15	9,9
638063	1"	230 V	15	13,4
638073	1¼"	230 V	15	22,8
638083	1½"	230 V	15	44
638093	2"	230 V	15	50
638055	¾"	24 V	15	9,9
638065	1"	24 V	15	13,4
638075	1¼"	24 V	15	22,8
638085	1½"	24 V	15	44
638095	2"	24 V	15	50

SPECIFICATION

- Max working pressure: 16 bar
- Temperature range: -10 - 110°C
- Ambient temperature range: -10 - 55°C

SPARE ACTUATOR



Size	Supply Voltage
638012	230 V
638014	24 V

SPARE ACTUATOR



638412

Size	Supply Voltage
638412	230 V
638414	24 V

INSULATION KIT



Size	size
CBN638153	¾"
CBN638163	1"
CBN638173	1¼"
CBN638183	1½" - 2"

INSULATION KIT



CBN638053

Size	size
CBN638053	¾"
CBN638063	1"
CBN638073	1¼"
CBN638083	1½" - 2"

MOTORISED TWO-WAY BALL VALVES FOR HIGH FLOW RATES

638092



MOTORISED THREE-WAY BALL VALVES WITH "L" DRILLING. 180° ROTATION

Size	Size	Supply voltage	Actuator torque (N-m)	Kv (m³/h)
638052	¾"	230 V	15	17
638062	1"	230 V	15	36,5
638072	1¼"	230 V	15	48
638082	1½"	230 V	15	77
638092	2"	230 V	15	140
638054	¾"	24 V	15	17
638064	1"	24 V	15	36,5
638074	1¼"	24 V	15	48
638084	1½"	24 V	15	77
638094	2"	24 V	15	140

SPECIFICATION

- Max working pressure: 16 bar
- Temperature range: -10 - 110°C
- Ambient temperature range: -10 - 55°C

638012



SPARE ACTUATOR

Size	Supply Voltage
638012	230 V
638014	24 V



INSULATION KIT

Size	size
CBN638052	¾"
CBN638062	1"
CBN638072	1¼"
CBN638082	1½" - 2"

MOTORISED VALVES FOR CENTRAL HEATING SYSTEMS

MOTORISED TWO-WAY BALL VALVE WITH MANUAL OPENING

Size	Size	Supply voltage	Actuator torque (N-m)	Kv (m³/h)
637202	2½"	230 V	120	170
637302	3"	230 V	120	253
637402	4"	230 V	120	450
637204	2½"	24 V	120	170
637304	3"	24 V	120	253
637404	4"	24 V	120	450
637212	DN 65	230 V	120	170
637312	DN 80	230 V	120	253
637412	DN 100	230 V	120	450
637214	DN 65	24 V	120	170
637314	DN 80	24 V	120	253
637414	DN 100	24 V	120	450

SPECIFICATION

- Temperature range: -10 - 110°C
- Ambient temperature range: -10 - 55°C

637202



637212



SPARE ACTUATOR

Size	Supply Voltage
637022	230 V
637024	24 V



Balancing Valves & Control Valves



Balancing
Valves &
Control
Valves

BALANCING VALVES & CONTROL VALVES

130 SERIES - MANUAL BALANCING VALVE - FLANGED

Ref no	Size	Weight (kg)	Kvs Value (Fully open)
130062	DN65	17.7	100
130082	DN80	19.9	111.9
130102	DN100	26	155
130122	DN125	36	268.4
130152	DN150	64.9	486
130202	DN200	114.5	710
130250	DN250	159	1188
130300	DN300	210.5	1504



130082

SPECIFICATION

- Maximum percentage of glycol : 50%
- Maximum working pressure : 16 bar
- Working temperature range (DN65 - DN200): -10 - 140°C, (DN250 - DN300): -10 - 120°C
- Connections: Flanged PN16

132 SERIES - MANUAL BALANCING VALVE WITH FLOW METER - FLANGED

Ref no	Size	Weight (kg)	l/s	Kvs Value (Fully open)
132060	DN65	14.6	2.27 - 7.95	75.4
132080	DN80	17.8	2.87 - 11.21	141.4
132100	DN100	24.4	4.16 - 15.91	209



132100

SPECIFICATION

- Maximum percentage of glycol : 50%
- Maximum working pressure : 10 bar
- Working temperature range : -10 - 110°C
- Connections: Flanged PN16

140515



140 SERIES - DIFFERENTIAL PRESSURE CONTROL VALVE

Ref no	Size	n x ø D	Weight (kg)	Δ p (kPa)
140506	DN65	4 x 18	21.6	20 - 80
140606	DN65	4 x 18	21.6	80 - 160
140508	DN80	8 x 18	28.1	20 - 80
140608	DN80	8 x 18	28.1	80 - 160
140510	DN100	8 x 18	33.6	20 - 80
140610	DN100	8 x 18	33.6	80 - 160
140512	DN125	8 x 18	46.4	20 - 80
140515	DN150	8 x 18	75.4	20 - 80

SPECIFICATION

- Maximum percentage of glycol : 50%
- Maximum working pressure : 16 bar
- Working temperature range : -10 - 120°C
- Connections: Flanged PN16

146150



146 SERIES - PRESSURE INDEPENDENT CONTROL VALVE

Ref no	Size	Flow Rates (m³/h)
146060	DN65	6 - 26
146080	DN80	8 - 36
146100	DN100	16 - 82.5
146120	DN125	20 - 125
146150	DN150	27 - 160

SPECIFICATION

- Maximum percentage of glycol : 50%
- Maximum static pressure : 16 bar
- Maximum differential pressure : 4 bar
- Working temperature range : -10 - 120°C
- Connections: Flanged PN16

103111...



FLOWCAL® 103 SERIES - AUTOMATIC FLOW CONTROL VALVE

Ref no	Size	Weight (kg)	Δ p (kPa)	Flow Rates (m³/h)
103111...	DN65	7.5	22 - 210	9 - 17
103113...	DN65	7.5	40 - 390	18 - 22
103121...	DN80	11.58	22 - 210	9 - 17
103123...	DN80	11.58	40 - 390	18 - 22
103131...	DN100	12.38	22 - 210	9 - 17
103133...	DN100	12.38	40 - 390	18 - 22
103141...	DN125	16.55	22 - 210	18 - 34
103143...	DN125	16.55	40 - 390	23 - 45
103151...	DN150	24.11	22 - 210	40 - 68
103153...	DN150	24.11	40 - 390	40 - 91
103161...	DN200	41.62	22 - 210	80 - 119
103163...	DN200	41.62	40 - 390	80 - 159
103171...	DN250	58.09	22 - 210	110 - 187
103173...	DN250	58.09	40 - 390	110 - 250
103181...	DN300	93.27	22 - 210	150 - 255
103183...	DN300	93.27	40 - 390	150 - 341
103191...	DN350	108.17	22 - 210	160 - 580
103193...	DN350	108.17	40 - 390	190 - 730

For selection of the correct 103 series valve, please call Altecnic with code and flow rate required.

SPECIFICATION

- Maximum percentage of glycol : 50%
- Maximum working pressure : 16 bar
- Working temperature range : -20 - 110°C
- Connections: Flanged PN16

Pressure Reducing Valves



Pressure Reducing Valves

PRESSURE REDUCING VALVES

The Caleffi range of pressure reducing valves are designed to cover domestic, commercial and light-industrial applications. Meeting the latest European standard and UK water regulations, the range of pressure reducing valves provides pressure control under both dynamic and static flow condition (dependent on model).

PRESCAL - SERIES 535 HIGH PERFORMANCE DIAL UP PRESSURE REDUCING VALVE

Ref no	Size	Max Pressure at Inlet	Outlet Adj Range	Connections	Gauge	Temperature
535015H	15mm	25 bar	1 - 6 bar	Compression	Port Only	Max 80°C
535022H	22mm	25 bar	1 - 6 bar	Compression	Port Only	Max 80°C
535028H	28mm	25 bar	1 - 6 bar	Compression	Port Only	Max 80°C
535041H	½"	25 bar	1 - 6 bar	M x M BSP	With Gauge	Max 80°C
535051H	¾"	25 bar	1 - 6 bar	M x M BSP	With Gauge	Max 80°C
535061H	1"	25 bar	1 - 6 bar	M x M BSP	With Gauge	Max 80°C
535071H	1¼"	25 bar	1 - 6 bar	M x M BSP	With Gauge	Max 80°C
535081H	1½"	25 bar	1 - 6 bar	M x M BSP	With Gauge	Max 80°C
535091H	2"	25 bar	1 - 6 bar	M x M BSP	With Gauge	Max 80°C
535040H	½"	25 bar	1 - 6 bar	M x M BSP	Port Only	Max 80°C
535050H	¾"	25 bar	1 - 6 bar	M x M BSP	Port Only	Max 80°C
535060H	1"	25 bar	1 - 6 bar	M x M BSP	Port Only	Max 80°C
535070H	1¼"	25 bar	1 - 6 bar	M x M BSP	Port Only	Max 80°C
535080H	1½"	25 bar	1 - 6 bar	M x M BSP	Port Only	Max 80°C
535090H	2"	25 bar	1 - 6 bar	M x M BSP	Port Only	Max 80°C



535051H

The series 535 range of dial up pressure reducing valves is designed for semi-commercial and industrial applications.



SPECIFICATION

- Max inlet pressure: 16 bar
- Outlet pressure setting range: 1 to 6 bar
- Factory setting: 3 bar
- Pressure gauge scale: 0 to 10 bar
- Pressure gauge connection: G¼
- Maximum temperature 80°C
- Certification: BS EN 1567
- Static control



PRESSURE REDUCING VALVES

536660



PRESCAL - SERIES 536 PRESSURE REDUCING VALVE

Ref no	Size	Max Pressure at Inlet	Outlet Adj Range	Connections	Gauge	Temperature
536040	½"	25 bar	0.5 - 6 bar	M x M BSP	Port Only	Max 80°C
536050	¾"	25 bar	0.5 - 6 bar	M x M BSP	Port Only	Max 80°C
536060	1"	25 bar	0.5 - 6 bar	M x M BSP	Port Only	Max 80°C
536070	1¼"	25 bar	0.5 - 6 bar	M x M BSP	Port Only	Max 80°C
536080	1½"	25 bar	0.5 - 6 bar	M x M BSP	Port Only	Max 80°C
536590	2"	25 bar	0.5 - 6 bar	M x M BSP	Port Only	Max 80°C
536041	½"	25 bar	0.5 - 6 bar	M x M BSP	With Gauge	Max 80°C
536051	¾"	25 bar	0.5 - 6 bar	M x M BSP	With Gauge	Max 80°C
536061	1"	25 bar	0.5 - 6 bar	M x M BSP	With Gauge	Max 80°C
536071	1¼"	25 bar	0.5 - 6 bar	M x M BSP	With Gauge	Max 80°C
536081	1½"	25 bar	0.5 - 6 bar	M x M BSP	With Gauge	Max 80°C
536591	2"	25 bar	0.5 - 6 bar	M x M BSP	2 Gauges	Max 80°C
536240	½"	25 bar	0.5 - 6 bar	F x F BSP	Port Only	Max 80°C
103-2050	15mm	25 bar	0.5 - 6 bar	Press Fit	With Gauge	Max 80°C
536250	¾"	25 bar	0.5 - 6 bar	F x F BSP	Port Only	Max 80°C
103-2051	22mm	25 bar	0.5 - 6 bar	Press Fit	With Gauge	Max 80°C
536260	1"	25 bar	0.5 - 6 bar	F x F BSP	Port Only	Max 80°C
103-2052	28mm	25 bar	0.5 - 6 bar	Press Fit	With Gauge	Max 80°C
536241	½"	25 bar	0.5 - 6 bar	F x F BSP	With Gauge	Max 80°C
536251	¾"	25 bar	0.5 - 6 bar	F x F BSP	With Gauge	Max 80°C
536261	1"	25 bar	0.5 - 6 bar	F x F BSP	With Gauge	Max 80°C
536660	DN65	25 bar	0.5 - 6 bar	Flanged PN16	2 Gauges	Max 80°C

The series 536 range of pressure reducing valves is designed for semi-commercial and industrial applications.

SPECIFICATION

- Max inlet pressure: 25 bar
- Max temperature: 80°C
- Outlet adj range: 0.5 - 6 bar
- Pressure gauge connection: G¼"
- Static control



PRESSURE REDUCING VALVES

FL-300100

PRESCAL - SERIES 300 PRESSURE REDUCING VALVE WITH FLANGED CONNECTIONS

Ref no	Size	Max Pressure at Inlet	Connections	Gauge	Temperature
FL-30050	DN50	16 bar	Flanged PN16	With Gauge	Max 85°C
FL-30065	DN65	16 bar	Flanged PN16	With Gauge	Max 85°C
FL-30080	DN80	16 bar	Flanged PN16	With Gauge	Max 85°C
FL-300100	DN100	16 bar	Flanged PN16	With Gauge	Max 85°C
FL-300150	DN150	16 bar	Flanged PN16	With Gauge	Max 85°C
FL-300200	DN200	16 bar	Flanged PN16	With Gauge	Max 85°C
FL-300250	DN250	16 bar	Flanged PN16	With Gauge	Max 85°C
FL-300300	DN300	16 bar	Flanged PN16	With Gauge	Max 85°C



The series 300 range is designed for commercial and industrial applications.

SPECIFICATION

- Flanged PN 16 (PN25 on request)
- Pilot operated offering total control
- Maximum temperature 85°C



SERIES 5360 - PRESSURE REDUCING VALVE FOR 1ST STAGE CONTROL

Ref no	Size	Connections	Temperature
536043 AUS	½"	M x M BSP	Max 80°C
536053 AUS	¾"	M x M BSP	Max 80°C
536063 AUS	1"	M x M BSP	Max 80°C
536073 AUS	1¼"	M x M BSP	Max 80°C
536083 AUS	1½"	M x M BSP	Max 80°C

The 5360 pressure reducing valve is a high performance valve manufactured specifically for high rise buildings and other applications where high pressures are present and require staged pressure control. The 5360 pressure reducing valve carries out the first stage of pressure reduction in a two valve series where the pressure ratio between the inlet and outlet would be too high for a single pressure reducing valve to control.

SPECIFICATION

- Max inlet pressure: 25 bar
- Max temperature: 80°C
- Pressure gauge connection: G¼"
- Includes gauge
- Outlet pressure setting range: 6 - 10 bar
- Factory setting: 8 bar



536043 AUS

Mixing Valves



Mixing Valves

THERMOSTATIC MIXING VALVES

THREE-WAY SECTOR MIXING VALVE

Ref no	Size	Kv (m ³ /h)
610400	Rp 1/2"	4
610500	Rp 3/4"	6,3
610600	Rp 1"	10
610700	Rp 1 1/4"	15
610800	Rp 1 1/2"	25
610900	Rp 2"	30



610500

SPECIFICATION

- Boiler inlet on RH connection
- Max working pressure: 10 bar
- Temperature range: 5 - 110°C

ACTUATOR FOR MIXING VALVES

Ref no	Supply voltage	Actuator torque (N-m)
637042	230 V	5
637044	24 V	5



637044

SPECIFICATION (637042)

- Control signal: 3 points ou 0-10 V
- Power consumption: 3 VA
- Protection class: IP44
- Rotation: 90°
- Operating time: 150s
- Ambient temperature range: 0 - 55°C
- Storage temperature range: -10 - 70°C
- Supply cable length: 1.5m

SPECIFICATION (637044)

- Control signal: 0-10 V
- Power consumption: 2 W
- Protection class: IP44
- Rotation: 90°
- Operating time: 75s
- Ambient temperature range: 0 - 55°C
- Storage temperature range: -10 - 70°C
- Supply cable length: 1.5m

BUTTERFLY MIXING VALVES

610005



610050



THREE-WAY BUTTERFLY MIXING VALVE

Ref no	Size	Connections	Kv (m³/h)
610005	¾"	Threaded	7,5
610006	1"	Threaded	11,9
610007	1¼"	Threaded	16,8
610008	1½"	Threaded	30
610009	2"	Threaded	45
610010	2½"	Threaded	72
610050	DN50 (2")	Flanged	45
610060	DN65 (2½")	Flanged	72
610080	DN80 (3")	Flanged	140
610100	DN100 (4")	Flanged	183
610120	DN125 (5")	Flanged	340

SPECIFICATION

- Boiler inlet on RH connection
- Max working pressure: 6 bar
- Temperature range: 2 - 110°C

611005



611050



FOUR-WAY BUTTERFLY MIXING VALVE

Ref no	Size	Connections	Kv (m³/h)
611005	¾"	Threaded	7,8
611006	1"	Threaded	12,3
611007	1¼"	Threaded	18,5
611008	1½"	Threaded	30
611009	2"	Threaded	53
611020	2¼"	Threaded	80
611050	DN50 (2")	Flanged	53
611060	DN65 (2½")	Flanged	80
611080	DN80 (3")	Flanged	140
611100	DN100 (4")	Flanged	230
611120	DN125 (5")	Flanged	410

SPECIFICATION

- Boiler inlet on RH connection
- Max working pressure: 6 bar
- Temperature range: 2 - 110°C

BUTTERFLY MIXING VALVES

THREE-WAY SECTOR MIXING VALVE

Ref no	Size	Connections	Kv (m³/h)
612005	¾"	Threaded	7,2
612006	1"	Threaded	11,9
612007	1¼"	Threaded	16,5
612008	1½"	Threaded	30
612009	2"	Threaded	42
612020	2¼"	Threaded	62
612050	DN50 (2")	Flanged	42
612060	DN65 (2½")	Flanged	62
612080	DN80 (3")	Flanged	123
612100	DN100 (4")	Flanged	172
612120	DN125 (5")	Flanged	340

SPECIFICATION

- Boiler inlet on RH connection
- Max working pressure: 6 bar
- Temperature range: 2 - 110°C

612005



612050



MOTORISED MIXING VALVES

612015



MOTORISED THREE-WAY SECTOR MIXING VALVE

Ref no	Size	Supply voltage	Boiler inlet	Kv (m³/h)
612015	¾"	230 V	LH Connection	7,2
612025	¾"	230 V	RH Connecton	7,2
612016	1"	230 V	LH Connection	11,9
612026	1"	230 V	RH Connecton	11,9
612017	1¼"	230 V	LH Connection	16,5
612027	1¼"	230 V	RH Connecton	16,5
612018	1½"	230 V	LH Connection	30
612028	1½"	230 V	RH Connecton	30
612019	2"	230 V	LH Connection	53
612029	2"	230 V	RH Connecton	53
612011	2¼"	230 V	LH Connection	80
612021	2¼"	230 V	RH Connecton	80

SPECIFICATION

- Max working pressure: 6 bar
- Temperature range: 2 - 110°C

612025



637002



ACTUATORS FOR MIXING VALVES FROM ¾" TO 1 ½"

Ref no	Supply voltage	Boiler inlet	Actuator torque (N-m)
637001	230 V	LH Connection	15
637002	230 V	RH Connecton	15
637003	24 V	LH Connection	15
637004	24 V	RH Connecton	15

SPECIFICATION

Please visit Altecnic.co.uk to view the actuator specification

637012



ACTUATORS FOR MIXING VALVES FROM 2" TO 5"

Ref no	Supply voltage	Actuator torque (N-m)
637012	230 V	35
637014	24 V	35

SPECIFICATION

Please visit Altecnic.co.uk to view the actuator specification

REGULATING VALVES

TWO-WAY REGULATING GLOBE VALVE

Ref no	Size	Connection	Kv (m³/h)
636400	DN15	½"	4
636500	DN20	¾"	6,3
636600	DN25	1"	10
636700	DN32	1¼"	16
636800	DN40	1½"	22
636900	DN50	2"	28



636400

SPECIFICATION

- Max working pressure: 16 bar
- Temperature range: 0 - 100°C

THREE-WAY REGULATING GLOBE VALVE

Ref no	Size	Connection	Kv (m³/h)
636410	DN15	½"	4
636510	DN20	¾"	6,3
636610	DN25	1"	10
636710	DN32	1¼"	16
636810	DN40	1½"	22
636910	DN50	2"	28



636410

SPECIFICATION

- Max working pressure: 16 bar
- Temperature range: 0 - 100°C

ACTUATORS

Ref no	Supply voltage	Nominal force (N)
636004	24 V	250
636002	230 V	500
636014	24 V	500



636004

SPECIFICATION

Please visit Altecnic.co.uk to view the actuator specification

REGULATING VALVES

636060



TWO/THREE-WAY REGULATING GLOBE VALVE, FLANGED

Ref no	Size	Kv (m³/h)
636060	DN65	63
636080	DN80	100
636100	DN100	160
636120	DN125	220
636150	DN150	320

SPECIFICATION

- Max working pressure: 16 bar
- Temperature range: 0 - 100°C

636024



ACTUATORS

Ref no	Supply voltage	Nominal force (N)
636024	24 V	1.000
636034	24 V	2.500

SPECIFICATION

Please visit Altecnic.co.uk to view the actuator specification

THERMOSTATIC MIXING VALVES

MIXCAL MIXPRO® THERMOSTATIC MIXING VALVES - SERIES 5231

524500

Ref no	Size	Connections	Check Valves	Temp adjustment	Kv (m³/h)
523140	½"	M BSP	No	Setting range 35 - 65°C	4,3
523150	¾"	M BSP	No	Setting range 35 - 65°C	4,5
523160	1"	M BSP	No	Setting range 35 - 65°C	5,5
523170	1¼"	M BSP	No	Setting range 35 - 65°C	7,6
523180	1½"	M BSP	No	Setting range 35 - 65°C	11,0
524500	2"	M BSP	No	Setting range 35 - 65°C	13,3
523162	28mm	Compression	Yes	Setting range 35 - 65°C	7,6



SPECIFICATION

- Max pressure: 14 bar
- Max incoming temperature: 85°C
- Pressure ratio: (H/C or C/H) : 2:1

MIXCAL MIXPRO® THERMOSTATIC MIXING VALVES - SERIES 5230

523060

Ref no	Size	Connections	Check Valves	Temp adjustment	Kv (m³/h)
523040	½"	M BSP	No	Setting range 30 - 65°C	4,0
523043	½"	M BSP	Yes	Setting range 30 - 65°C	4,0
523050	¾"	M BSP	No	Setting range 30 - 65°C	4,5
523053	¾"	M BSP	Yes	Setting range 30 - 65°C	4,5
523060	1"	M BSP	No	Setting range 30 - 65°C	6,9
523063	1"	M BSP	Yes	Setting range 30 - 65°C	6,9
523070	1¼"	M BSP	No	Setting range 30 - 65°C	9,1
523073	1¼"	M BSP	Yes	Setting range 30 - 65°C	9,1
523080	1½"	M BSP	No	Setting range 36 - 60°C	14,5
523090	2"	M BSP	No	Setting range 36 - 60°C	19,0
523052	22mm	Compression	Yes	Setting range 30 - 65°C	4,5
523062	28mm	Compression	Yes	Setting range 30 - 65°C	6,9



SPECIFICATION

- Max pressure: 14 bar
- Max incoming temperature: 85°C
- Pressure ratio: (H/C or C/H) : 2:1

THERMOSTATIC MIXING VALVES

524500



THERMOSTATIC MIXING VALVES - SERIES 524

Ref no	Body	Connection	Temp adjustment	Kv (m³/h)
524400	DN15	1 1/8"	30 - 65°C	1,4
524500	DN20	1 1/4"	30 - 65°C	2,5
524600	DN25	1 1/2"	30 - 65°C	4,0
524700	DN32	2"	30 - 65°C	7,7
524800	DN40	2 1/4"	30 - 65°C	11,5
524900	DN50	2 3/4"	30 - 65°C	15,0
524060	DN65	-	36 - 53°C(±2°C)	32,0
524080	DN80	-	36 - 53°C(±2°C)	43,0

SPECIFICATION

- Max pressure: 10 bar
- Max incoming temperature: 90°C

524005



CONNECTION KIT FOR THERMOSTATIC MIXING VALVES - SERIES 524

Ref no	Size	Description
524004	1/2"	for 524400
524005	3/4"	for 524500
524006	1"	for 524600
524007	1 1/4"	for 524700
524008	1 1/2"	for 524800
524009	2"	for 524900

SPECIFICATION

- 2x female unions with check valves, strainers and seals
- 1x female union with seal

THERMOSTATIC MIXING VALVES

LEGIOMIX® 2.0 6000 SERIES - HYBRID ELECTRONIC MIXING VALVE

Ref no	Size	Connections	Body	Kv (m³/h)
600045	1/2"	1/2"	DN15	4,3
600055	3/4"	3/4"	DN20	4,3
600065	1"	1"	DN25	7,6
600075	1 1/4"	1 1/4"	DN32	10,0
600085	1 1/2"	1 1/2"	DN40	13,0
600095	2"	2"	DN50	18,0

SPECIFICATION

- Max working pressure (static): 10 bar
- Max incoming temperature: 90°C
- Adjustment temperature range: 35 - 65°C
- Disinfection temperature range: 50 - 85°C

600045



SPARE PARTS

Ref no	Description
F0000964	Body without unions for DN15
F0000965	Body without unions for DN20
F0000966	Body without unions for DN25
F0000967	Body without unions for DN32
F0000968	Body without unions for DN40
F0000969	Body without unions for DN50
F69807	Mixed water probe for 1/2" - 2"
F69591	Recirculation probe for check on disinfection
F69531	Contact probe holder for check on disinfection
F29571	Temperature gauge 0 - 120°C
F0000970	Digital regulator with actuator for DN15 - DN20
F0000971	Digital regulator with actuator for DN25 - DN50

F0000964



THERMOSTATIC MIXING VALVES

600061



LEGIOMIX® 6000 SERIES - ELECTRONIC MIXING VALVE WITH THERMAL DISINFECTION - 230 V

Ref no	Size	Kv (m³/h)
600051	¾"	8,4
600061	1"	10,6
600071	1¼"	21,2
600081	1½"	32,5
600091	2"	41,0

SPECIFICATION

- Max working pressure: 10 bar
- Max inlet temperature: 100°C
- Adjustment temperature range: 20 - 85°C
- Disinfectant temperature range: 40 - 85°C

THERMOSTATIC MIXING VALVES

LEGIOMIX® 6000 SERIES - ELECTRONIC MIXING VALVE WITH THERMAL DISINFECTION - 230 V

Ref no	Size	Kv (m³/h)
600006	DN65	90,0
600008	DN80	120,0

SPECIFICATION

- Max working pressure: 10 bar
- Max inlet temperature: 100°C
- Adjustment temperature range: 20 - 85°C
- Disinfectant temperature range: 40 - 85°C

600006



LEGIOMIX® INTERFACE

Size	Description
600100	interface

For local or remote transmission and management of the electronic mixing valve 6000 series.

600100





LEGIOMIX® 6000 SERIES - ELECTRONIC MIXING VALVE WITH THERMAL DISINFECTION - 24 V

Ref no	Size	Kv (m³/h)
600054	¾"	8,4
600064	1"	10,6
600074	1¼"	21,2
600084	1½"	32,5
600094	2"	41,0

SPECIFICATION

- Max working pressure: 10 bar
- Max inlet temperature: 100°C
- Adjustment temperature range: 20 - 85°C
- Disinfectant temperature range: 40 - 85°C

600016



LEGIOMIX® 6000 SERIES - ELECTRONIC MIXING VALVE WITH THERMAL DISINFECTION - 24 V

Ref no	Size	Kv (m³/h)
600016	DN65	90,0
600018	DN80	120,0

SPECIFICATION

- Suitable for BMS with MODBUS-RTU management
- Max working pressure: 10 bar
- Max inlet temperature: 100°C
- Adjustment temperature range: 20 - 85°C
- Disinfectant temperature range: 40 - 85°C

Backflow Prevention



Backflow Prevention

BACKFLOW PREVENTION

There are legal requirements regulating water installations in domestic, commercial and health care premises. A backflow prevention device is used to protect potable water supplies from being contaminated or polluted.

574040



RPZ VALVES

Ref no	Size	Connections	Pressure
574040	½"	M x M BSP	16 bar
574050	¾"	M x M BSP	16 bar
574600	1"	M x M BSP	16 bar
574700	1¼"	M x M BSP	16 bar
574800	1½"	M x M BSP	16 bar
574900	2"	M x M BSP	16 bar
575006	DN65	Flanged PN16	16 bar
575008	DN80	Flanged PN16	16 bar
575010	DN100	Flanged PN16	16 bar

The Altecnic range of BA type back flow prevention devices designed for applications in water distribution systems to prevent back siphonage and back flow in fluid category 4 applications.

SPECIFICATION

- Maximum pressure at inlet : 16 bar
- Maximum working temperature : 65°C
- Complete list of spares available



575010



128-2001 CST



TUNDISHES

Ref no	Size	Connections	Body	Description
128-2001 CST*	1" x 1¼"	F x F BSP	Straight	Mild steel
128-2003 CST	1½" x 2"	F x F BSP	Straight	Mild steel
128-2004 CST*	2" x 2½"	F x F BSP	Straight	Mild steel
128-2005 CST	2½" x 3"	F x F BSP	Straight	Mild steel

SPECIFICATION

- Suitable for use where air gap or air break is required in sealed or unvented systems.



BACKFLOW PREVENTION

DOUBLE CHECK VALVES - ECOFIL®

Ref no	Size	Connections	Pressure
AI-903015	½"	F x F BSP	10 bar
AI-903020	¾"	F x F BSP	10 bar
AI-903025	1"	F x F BSP	10 bar
AI-903032	1¼"	F x F BSP	10 bar
AI-903040	1½"	F x F BSP	10 bar
AI-903050	2"	F x F BSP	10 bar



AI-903020

SPECIFICATION

- Dezincification resistant brass alloy
- Max working pressure: 10 bar
- Max working temperature: 60°C



SINGLE CHECK VALVES

Ref no	Size	Connections	Pressure
ALT-SCV015	½"	F x F BSP	10 bar
ALT-SCV020	¾"	F x F BSP	10 bar
ALT-SCV025	1"	F x F BSP	10 bar
ALT-SCV032	1¼"	F x F BSP	10 bar
ALT-SCV040	1½"	F x F BSP	10 bar
ALT-SCV050	2"	F x F BSP	10 bar



ALT-SCV015

SPECIFICATION

- Dezincification resistant brass alloy
- Yellow brass finish to body
- Max working pressure: 10 bar
- Max working temperature: 60°C



Buffer Vessels



Buffer Vessels

BUFFER VESSELS

Altecnic offer a range of buffer vessels, with and without insulation, to suit your plant room requirements.

PLANT-ROOM BUFFER VESSELS

Ref no	Description	Capacity (Litre)
HV1000Y	LTHW buffer vessel	1000
HV1500Y	LTHW buffer vessel	1500
HV2000Y	LTHW buffer vessel	2000
HV2500Y	LTHW buffer vessel	2500

1000 to 2500 litre vessels include insulation as standard

Ref no	Description	Capacity (Litre)
HV3000Y	LTHW buffer vessel	3000
HV4000Y	LTHW buffer vessel	4000
HV5000Y	LTHW buffer vessel	5000



HV1000Y



HV3000Y

SPECIFICATION

- For LTHW storage
- Maximum operating pressure 6 bar
- Maximum operating temperature 95°C
- Red, powder coated exterior

BUFFER VESSEL INSULATION

Ref no	Description
HVA3000A	3000 litre vessel insulation
HVA4000A	4000 litre vessel insulation
HVA5000A	5000 litre vessel insulation

SPECIFICATION

- Thermal insulation to suit the buffer vessels
- 90mm thick, 'soft' PU insulation
- Includes white PUF foil coat

BUFFER VESSEL OPTIONS

Capacity (Litre)	Vessel	Insulation Foam	Capacity (Litre)	Vessel	Insulation Foam
300	ST300E	N/A	2000	ST2000E	N/A
500	ST500E	N/A	3000	ST3000F	ST3000W
800	ST800E	N/A	4000	ST4000F	ST4000W
1000	ST1000E	N/A	5000	ST5000F	ST5000W
1500	ST1500E	N/A			

Essential Components



Essential Components

ESSENTIAL COMPONENTS

Altecnic provide a range of essential products for use in plant rooms.

SAFETY RELIEF VALVES - SERIES 527

Ref no	Size	Connections
5274**EST	½" x ¾"	F x F BSP
5275**EST	¾" x 1"	F x F BSP
5276**EST	1" x 1¼"	F x F BSP
5277**EST	1¼" x 1½"	F x F BSP

Ref no	completion
Bar	**
2,25	22
2,5	25
2,7	27
3	30
3,5	35
4	40
4,5	45
5	50
5,4	54
6	60



SPECIFICATION

- Working temperature: 5 - 110°C

COMMERCIAL METERING STATIONS

Ref no	Description
206-3001	CIM 721 ½" UUL DZR Metering Station
206-3002	CIM 722 ½" ULL DZR Metering Station
206-3003	CIM 723 ½" UL DZR Metering Station
206-3004	CIM 724 ½" L DZR Metering Station
206-3005	CIM 725 ½" M DZR Metering Station
206-3006	CIM 726 ½" DZR Metering Station
206-3007	CIM 727 ¾" DZR Metering Station
206-3008	CIM 728 1" DZR Metering Station
206-3009	CIM 729 1¼" DZR Metering Station
206-3010	CIM 730 1½" DZR Metering Station
206-3011	CIM 731 2" DZR Metering Station
206-3101	CIM 3723B DN50 SS Metering Station
206-3102	CIM 3723B DN65 SS Metering Station
206-3103	CIM 3723B DN80 SS Metering Station
206-3104	CIM 3723B DN100 SS Metering Station
206-3105	CIM 3723B DN125 SS Metering Station
206-3106	CIM 3723B DN150 SS Metering Station
206-3107	CIM 3723B DN200 SS Metering Station
206-3108	CIM 3723B DN250 SS Metering Station
206-3109	CIM 3723B DN300 SS Metering Station



SPECIFICATION - DZR FLOW MEASURING DEVICES

- Max. working pressure: 20 bar
- Temperature range: -10 to 120°C

SPECIFICATION - STAINLESS STEEL FLOW MEASURING DEVICES

- Max. working pressure: 16 bar

ESSENTIAL COMPONENTS

688000



TEMPERATURE GAUGES

Ref no	Size	Connections	Probe	Temperature
688100	80mm Ø dial	½" bottom connection	45mm probe length	0-120°C

503040



TEMPERATURE AND PRESSURE GAUGES

Ref no	Size	Connections	Pressure	Temperature
503160	80mm Ø dial	½" bottom connection	0 - 6 bar	0-120°C

SPECIFICATION

- ½" central back connection
- With shut-off pocket
- Ø 80 mm
- Accuracy class: - temperature gauge UNI 2 - pressure gauge UNI 2,5

557706



PRESSURE GAUGES

Ref no	Size	Connections	Pressure
557104	50mm Ø dial	¼" back connection	0 - 4 bar
557204	50mm Ø dial	¼" "off-centre" back connection	0 - 4 bar
557304	50mm Ø dial	¼" bottom connection	0 - 4 bar
557106	50mm Ø dial	¼" back connection	0 - 6 bar
557306	50mm Ø dial	¼" bottom connection	0 - 6 bar
557310	50mm Ø dial	¼" bottom connection	0 - 10 bar
557410	63mm Ø dial	¼" back connection	0 - 10 bar
557425	63mm Ø dial	¼" back connection	0 - 25 bar
557704	80mm Ø dial	3/8" bottom connection	0 - 4 bar
557706	80mm Ø dial	3/8" bottom connection	0 - 6 bar
557710	80mm Ø dial	3/8" bottom connection	0 - 10 bar

SPECIFICATION

- Accuracy class: UNI 2,5
- Working temperature: -20°C to +80°C

556000



PRESSURE GAUGE FOR EXPANSION VESSEL PRESSURE TEST

Ref no	Pressure
556000	0 - 10 bar

SPECIFICATION

- Accuracy class: UNI 2,5

ESSENTIAL COMPONENTS

TEMPERATURE AND PRESSURE GAUGES

Ref no	Size	Connections	Pressure	Temperature
503040	80mm Ø dial	½" back connection	0 - 4 bar	0 - 120°C
503060	80mm Ø dial	½" back connection	0 - 6 bar	0 - 120°C
503140	80mm Ø dial	½" bottom connection	0 - 4 bar	0 - 120°C
503160	80mm Ø dial	½" bottom connection	0 - 6 bar	0 - 120°C



503040

SPECIFICATION

- With shut-off probe
- Accuracy class: temperature gauge UNI 2, pressure gauge UNI 2,5

TEMPERATURE GAUGES

Ref no	Size	Connections	Probe Length	Temperature
688000	80mm Ø dial	½" back connection	45mm	0 - 120°C
688010	80mm Ø dial	½" back connection	100mm	0 - 120°C
688011	80mm Ø dial	½" back connection	-	0 - 120°C
688100	80mm Ø dial	½" bottom connection	45mm	0 - 120°C



688000

SPECIFICATION

- Accuracy class: UNI 2

TEMPERATURE GAUGES FOR COOLING SYSTEMS

Ref no	Size	Connections	Probe Length	Temperature
687100	80mm Ø dial	½" back connection	45mm	-30 - 50°C
687010	80mm Ø dial	½" back connection	100mm	-30 - 50°C
687110	80mm Ø dial	½" bottom connection	100mm	-30 - 50°C



687110

SPECIFICATION

- Accuracy class: UNI 2

FLOW GAUGES

Ref no	Size	Connections	mWG
689010	80mm Ø dial	3/8" bottom connection	0 - 10
689016	80mm Ø dial	3/8" bottom connection	0 - 16
689025	80mm Ø dial	3/8" bottom connection	0 - 25



689025

SPECIFICATION

- Accuracy class: UNI 2,5
- Working temperature: -20°C to +90°C

Area with horizontal lines for notes.

For more information on the full range of Altecnic Products, visit www.altecnic.co.uk

or contact us on
+44(0)1785 218 200
or email
plantroom@altecnic.co.uk



We have a domestic guide and commercial guide available.

To purchase any products in this brochure, please visit your local plumbers merchant.

Use the handy store locator tool on our website



General information

Office hours:

Monday to Friday 8.30am - 5.00pm.

Terms:

A copy of Altecnic's terms and conditions is available on request.

Property of goods:

Until full payment has been received, all goods supplied remain the property of Altecnic Ltd.

Delivery:

Carriage paid 3 day service, UK mainland only.
(Minimum order value of £50 applies or £7.50 small order charge applies.)

Customer Care Notice

Full details of Altecnic's Returns Policy are available at www.altecnic.co.uk.



PLA-BOOK 21



Altecnic Ltd - CALEFFI group

Mustang Drive, Stafford, Staffordshire ST16 1GW

T: 01785 218200 F: 01785 218201 E: sales@altecnic.co.uk

Registered in England No: 2095101

altecnic.co.uk

© Patents & Design Altecnic 2021

Altecnic Ltd retains all rights (including patents, designs and copyrights, trademarks and any other intellectual property rights) in relation to all information provided on or via the website, brochures or any other documents, including all texts, graphics and logos, contained on the website, in brochures or in any other documents published in the name of or on behalf of Altecnic Ltd in any form, without prior written consent of Altecnic Ltd.